

Trailer Hitch Platform Package Installation

Table 1: [Light Duty Hitch Platform Kit Contents](#)

Table 2: [Heavy Duty Hitch Platform Kit Contents](#)

Installation Instructions Part Number

22994292

Light Duty Hitch Platform Kit Contents

Qty	Description
1	Z82 Hitch Platform
2	M14 x 2 x 80mm Hex Flange Bolt
2	M14 x 2mm Nut
1	Electrical Receptacle

Heavy Duty Hitch Platform Kit Contents

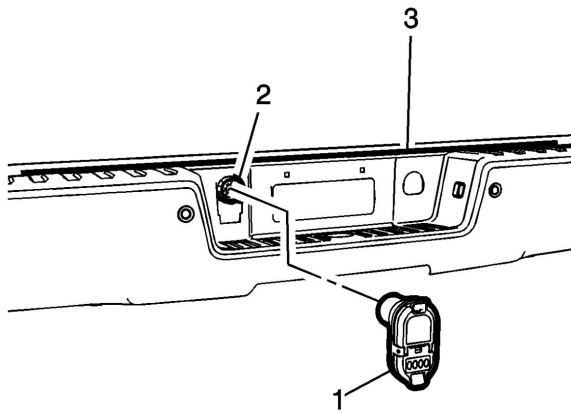
Qty	Description
1	Hitch Platform
4	M14 x 2 x 80mm Hex Flange Bolt
4	M14 x 2mm Nut
1	Electrical Receptacle

[Light Duty Hitch Platform Procedure](#)

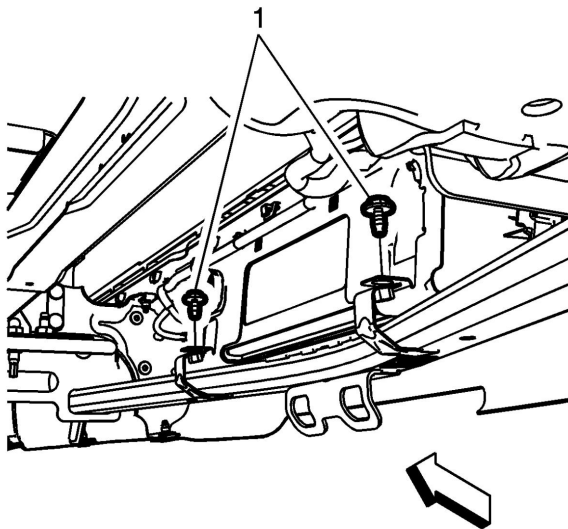
Warning:

- Wear Safety glasses in order to avoid eye damage.
- In order to avoid being burned, do not service the vehicle while the exhaust system is still hot. Service the vehicle when the exhaust system is cool.

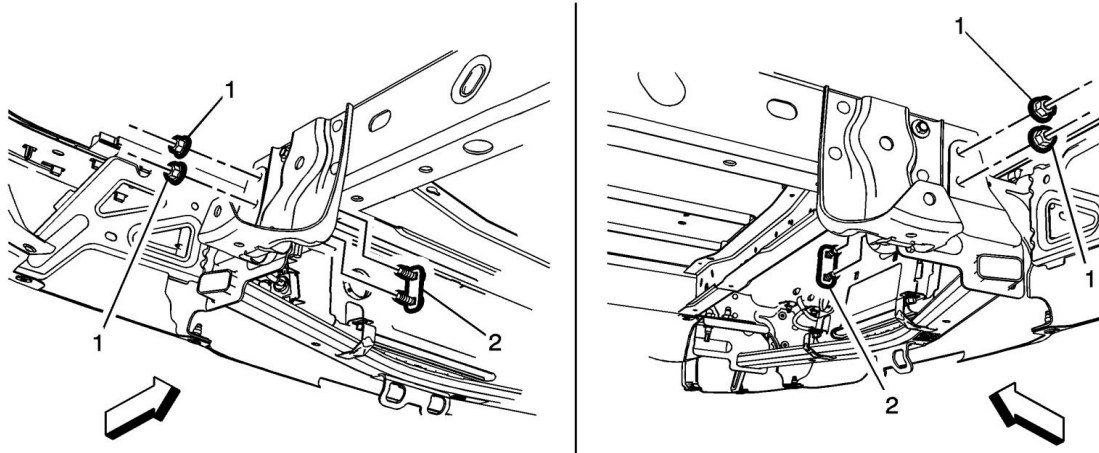
1. Raise and secure the vehicle.



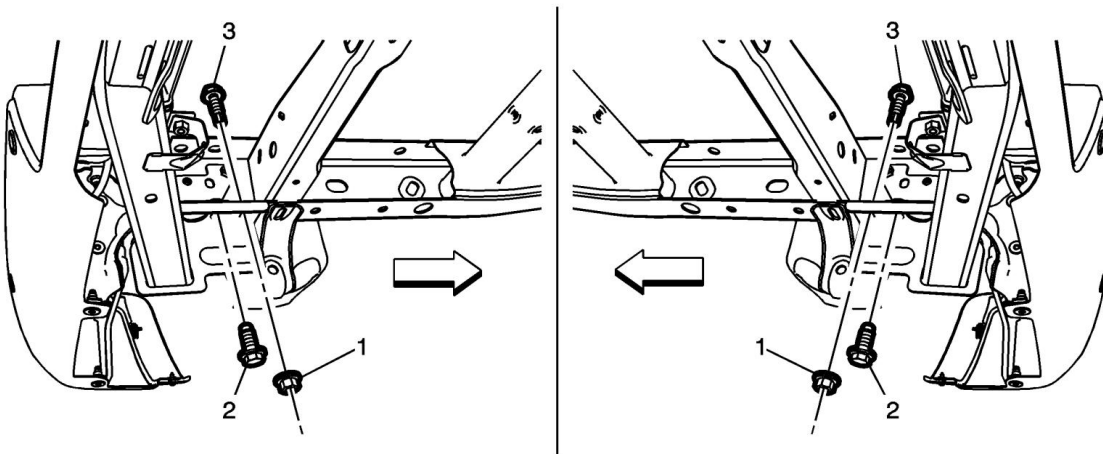
2. Remove the trailer harness cap from the rear bumper, disconnect the harness and discard the trailer harness cap.
3. Connect the supplied receptacle (1) to harness (2) and install receptacle into rear bumper (3).



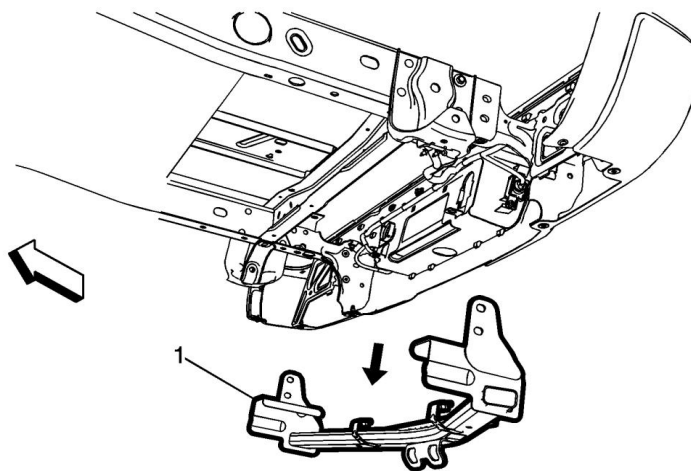
4. Remove and retain the M8 x 1.25 x 20mm bolts (1) from the rear bumper.



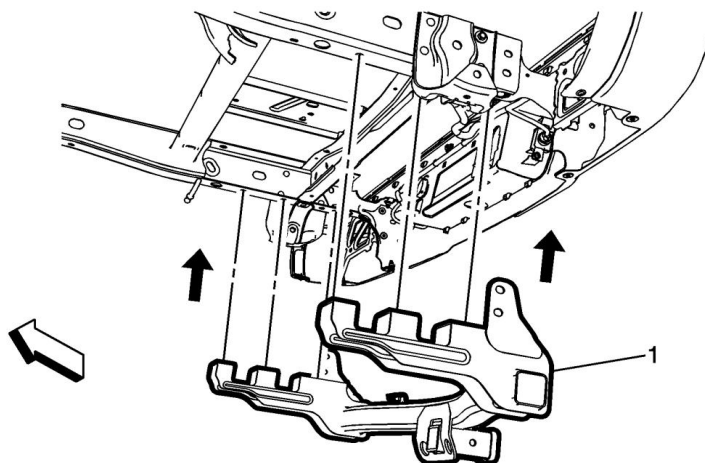
5. Remove and retain the nuts (1) and M12 x 1.75 x 40mm stud plates (2) from the rear bumper brackets.



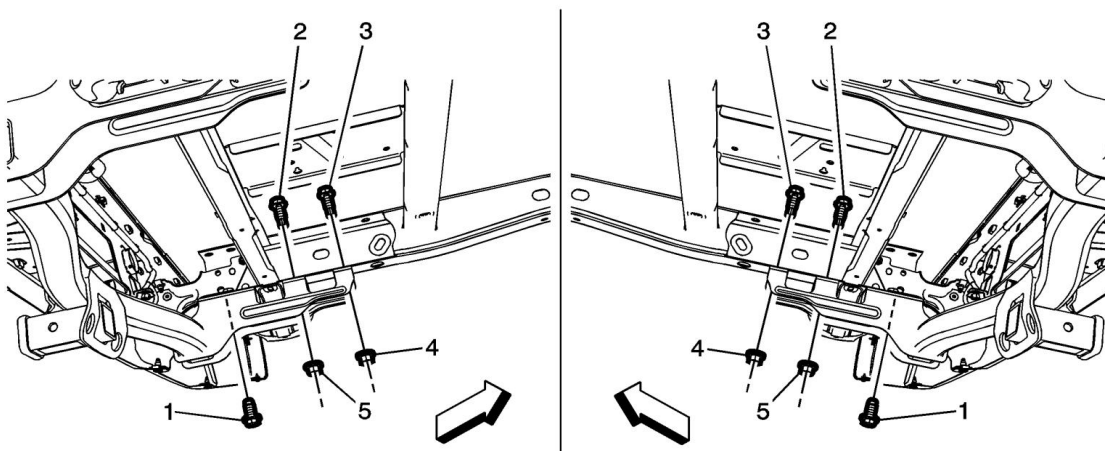
6. Remove and retain the M14 x 2 x 45mm bolts (2) from the rear bumper bracket and hitch platform bracket.
7. Remove and retain the M14 x 2 x 80mm bolts (3) and M14 x 2 nuts (1) from the hitch platform bracket and frame.



8. Remove the light duty base hitch platform (1) from vehicle.



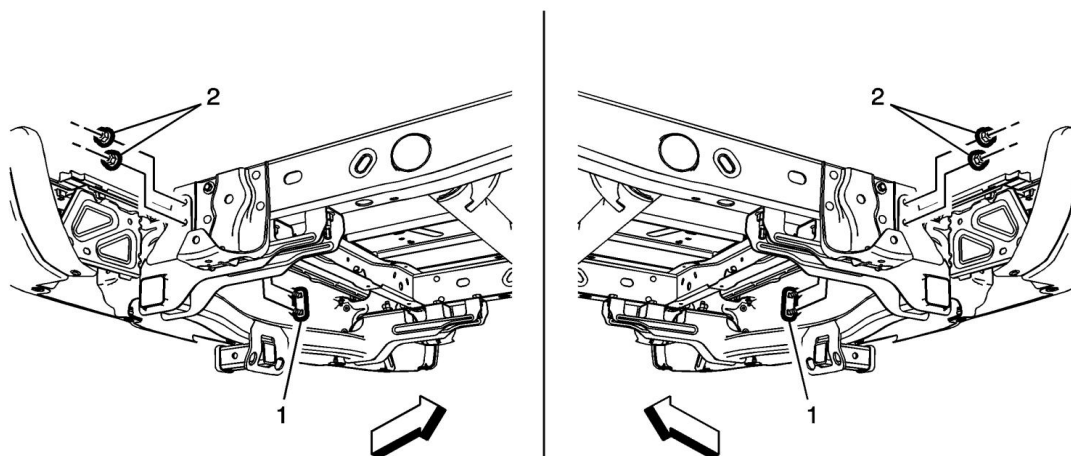
9. Position and support hitch platform assembly (1) supplied in kit to the vehicle frame.



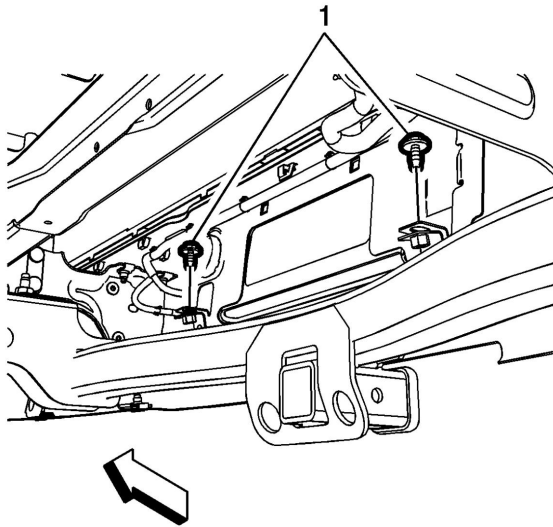
Caution: Use the correct fastener in the correct location. Replacement fasteners must be the correct part number for that application. Fasteners requiring replacement or

fasteners requiring the use of thread locking compound or sealant are identified in the service procedure. Do not use paints, lubricants, or corrosion inhibitors on fasteners or fastener joint surfaces unless specified. These coatings affect fastener torque and joint clamping force and may damage the fastener. Use the correct tightening sequence and specifications when installing fasteners in order to avoid damage to parts and systems.

10. Attach the hitch platform assembly to the vehicle frame with two previously retained M14 x 2 x 80mm bolts (2) and M14 x 2 nuts (5).
 11. Install the two supplied M14 x 2 x 80mm bolts (3) and M14 x 2 nuts (4) to the hitch platform assembly.
Tighten
Tighten the M14 x 2 nuts (4), (5) to $112.5 \pm 12.5 \text{ Y}$ ($83 \pm 9 \text{ lb ft}$).
- Note:** Apply Loctite 262® (Red High Strength) to the M14 x 2 x 45mm bolts prior to installation.
12. Install the previously retained M14 x 2 x 45mm bolts (1) to the existing weld nuts on the rear bumper brackets.
Tighten
Tighten the M14 x 2 x 45mm bolts (1) to $140 \pm 10.5 \text{ Y}$ ($103 \pm 7 \text{ lb ft}$).



13. Install the previously retained M12 x 1.75 x 40mm stud plates (1) and nuts (2) to the hitch platform and bumper brackets.
Tighten
Tighten the nuts (2) to $71 \pm 14 \text{ Y}$ ($52 \pm 10 \text{ lb ft}$).



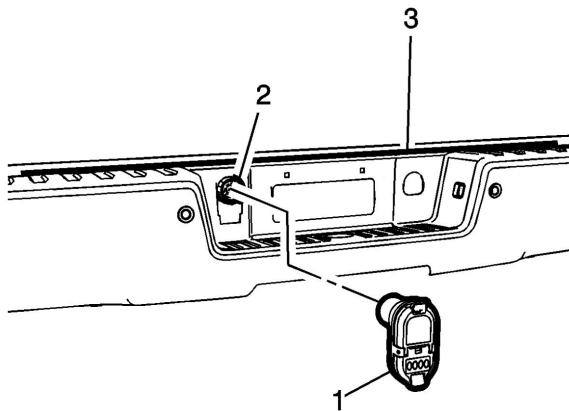
14. Install the previously retained M8 x 1.25 x 20mm bolts (1) to the rear bumper and hitch platform.
Tighten
Tighten the M8 x 1.25 x 20mm bolts (1) to 22 ± 3 Y (16 ± 2 lb ft).

[Heavy Duty Hitch Platform Procedure](#)

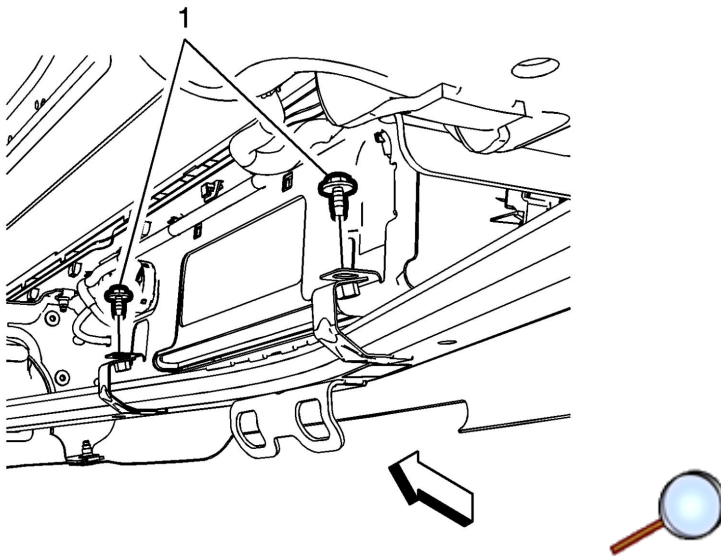
Warning:

- Wear Safety glasses in order to avoid eye damage.
- In order to avoid being burned, do not service the vehicle while the exhaust system is still hot. Service the vehicle when the exhaust system is cool.

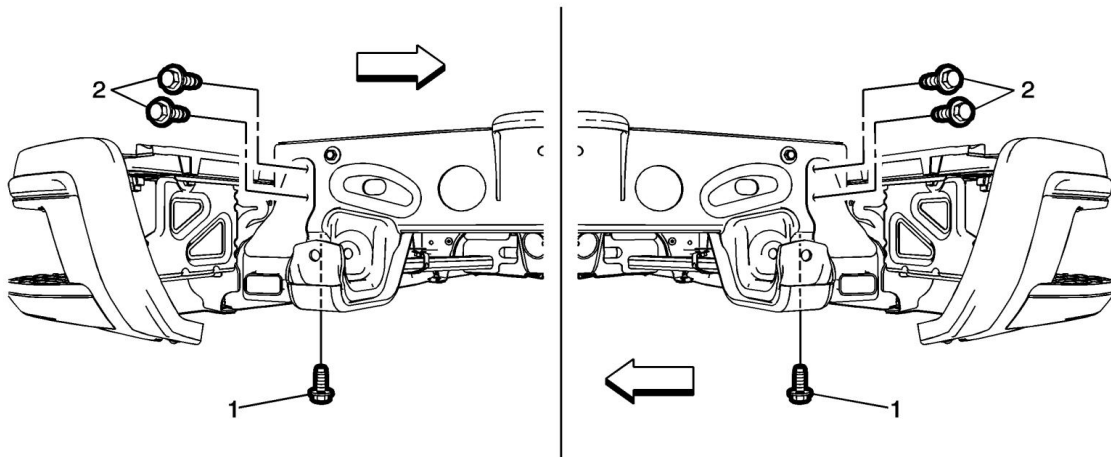
1. Raise and secure the vehicle.



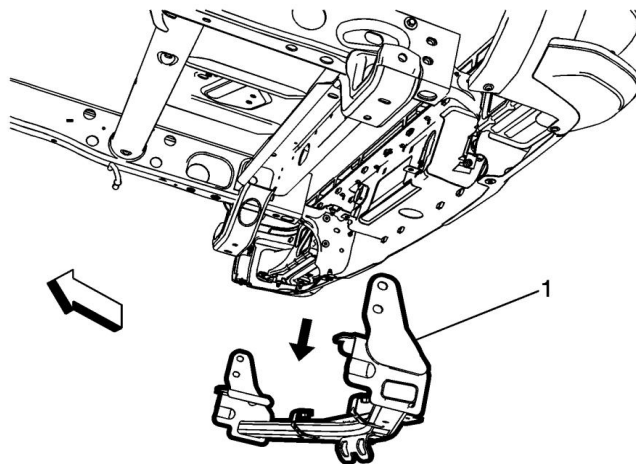
2. Remove the trailer harness cap from the rear bumper, disconnect the harness and discard the trailer harness cap.
3. Connect the supplied receptacle (1) to harness (2) and install receptacle into rear bumper (3).



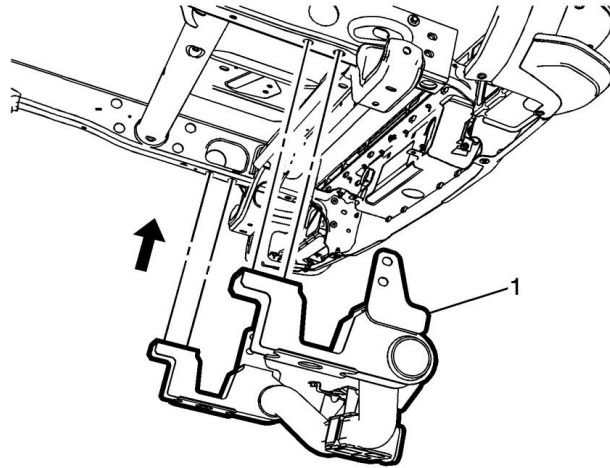
4. Remove and retain the M8 x 1.25 x 20mm bolts (1) from the rear bumper.



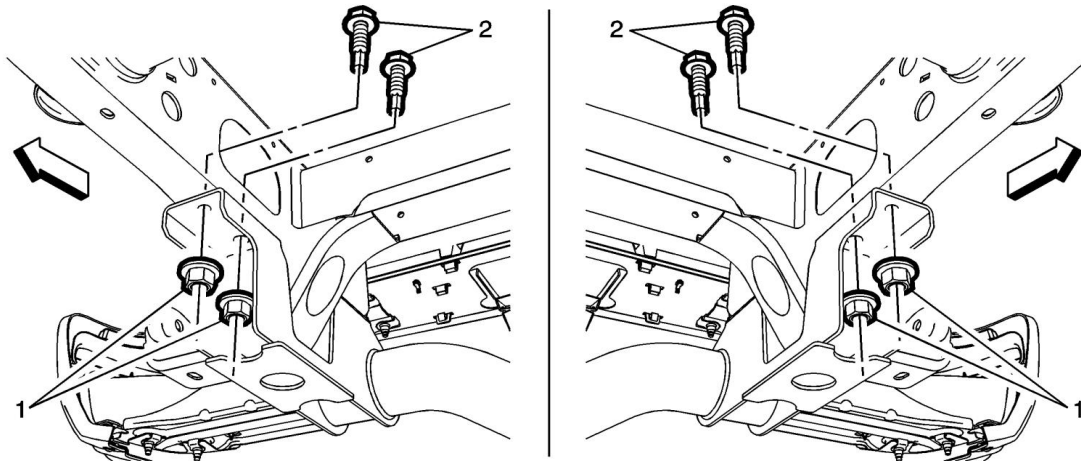
5. Remove and retain the M14 x 2 x 45mm bolts (1), (2) from the rear bumper bracket and hitch platform bracket.



6. Remove the heavy duty base hitch platform (1) from vehicle.



7. Position and support hitch platform assembly (1) supplied in kit to the vehicle frame.

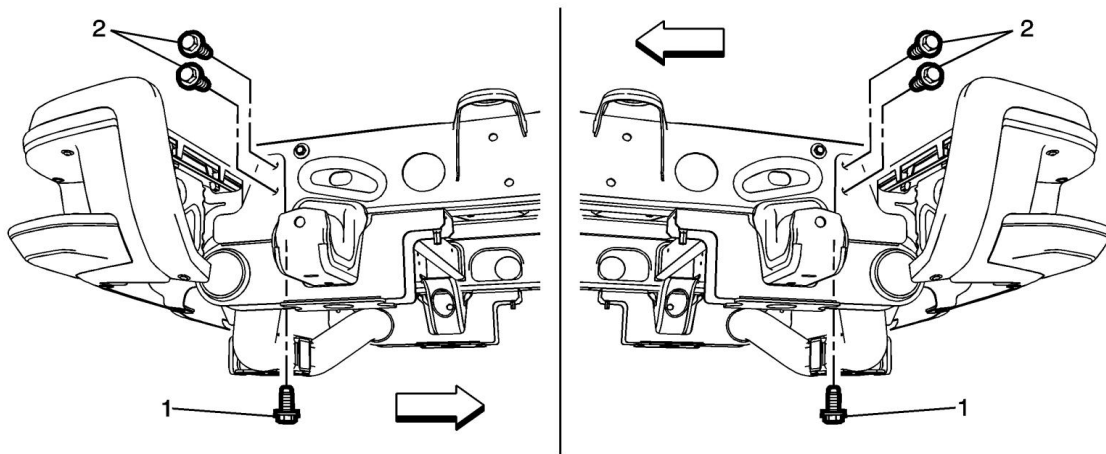


Caution: Use the correct fastener in the correct location. Replacement fasteners must be the correct part number for that application. Fasteners requiring replacement or fasteners requiring the use of thread locking compound or sealant are identified in the service procedure. Do not use paints, lubricants, or corrosion inhibitors on fasteners or fastener joint surfaces unless specified. These coatings affect fastener torque and joint clamping force and may damage the fastener. Use the correct tightening sequence and specifications when installing fasteners in order to avoid damage to parts and systems.

8. Attach the hitch platform assembly to the vehicle frame with four supplied M14 x 2 x 80mm bolts (2) and M14 x 2 nuts (1).

Tighten

Tighten the M14 x 2 nuts (1) to 112.5 ± 12.5 Y (83 ± 9 lb ft).

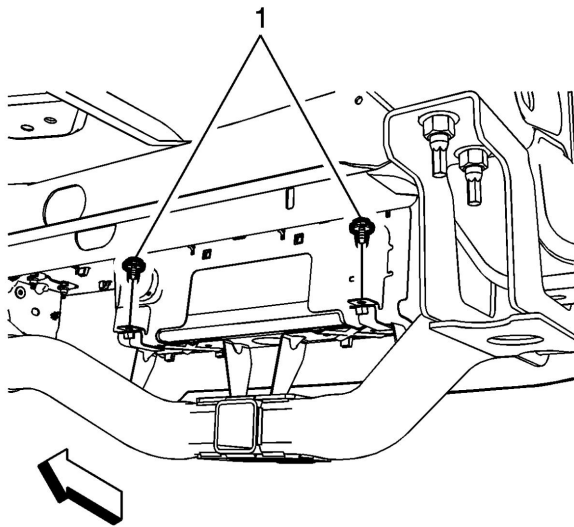


Note: Apply Loctite 262® (Red High Strength) to the M14 x 2 x 45mm bolts prior to installation.

9. Install the previously retained M14 x 2 x 45mm bolts (1), (2) to the existing weld nuts on the rear bumper brackets.

Tighten

Tighten the M14 x 2 x 45mm bolts (1), (2) to 140 ± 10.5 Y (103 ± 7 lb ft).



10. Install the previously retained M8 x 1.25 x 20mm bolts (1) to the rear bumper and hitch platform.

Tighten

Tighten the M8 x 1.25 x 20mm bolts (1) to 22 ± 3 Y (16 ± 2 lb ft).