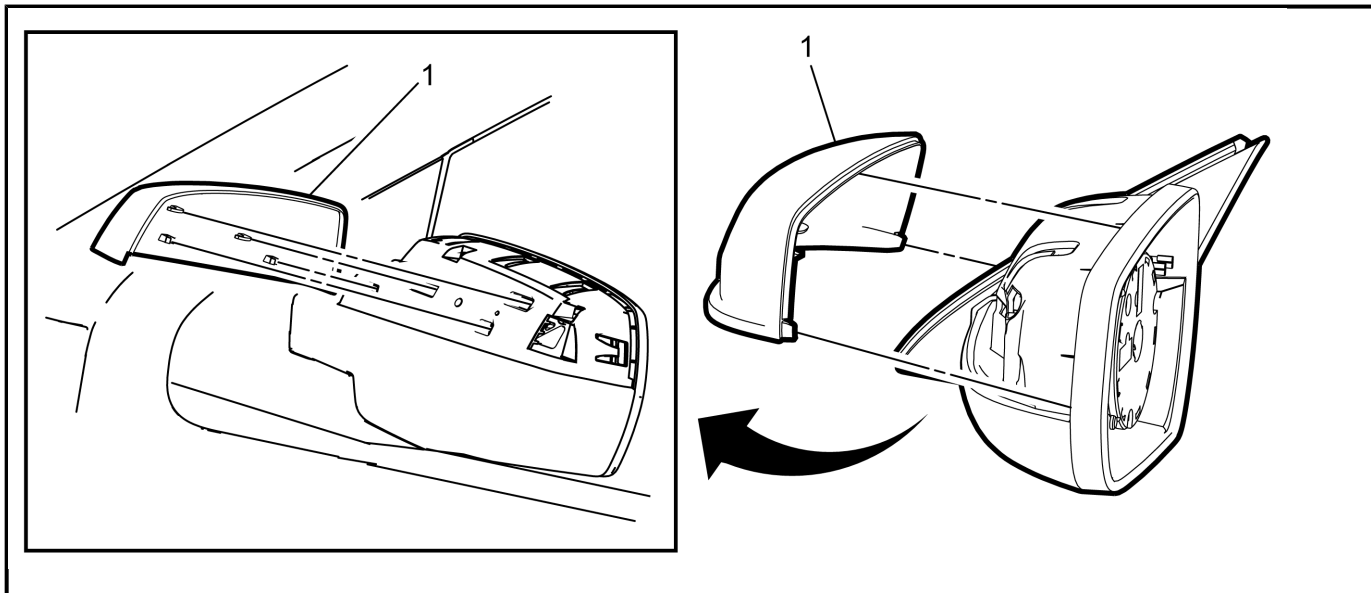


Outside Rearview Mirror Housing Cover Package Installation

Installation Instruction Part Number

23251582

Procedure



3964450

1. Firmly grasp mirror housing cover (1) and lift upwards then outwards from the mirror to release the retainers.
2. Align the new chrome mirror housing cover (1) with the base of the outside mirror housing assembly, push forward until the housing cover is fully seated into the outside rearview mirror base retaining tabs.

Note: Inspect the outside rearview mirror for proper operation.