

Document ID: 4889204

Air Cleaner Kit Installation

Installation Instructions Part Number

84089443

Kit Contents

Qty	Description
1	Air Box Bottom
1	Airbox Foam Seal
1	Airbox Clear Top
4	Airbox Top Bolts
1	Air Filter
1	Mass Air Flow Sensor (MAFS) Tube
1	MAFS tube to Airbox Rubber Coupler
1	MAFS to Clean Air Duct Bellows
1	Clean Air Duct
1	Clean Air Duct to Throttle Body Rubber Coupler
1	Positive Crankcase Ventilation (PCV) Line 20 inch
1	PCV Line 10.5 inch
1	PCV Line 2.5 inch

Qty	Description
2	PCV Line to Engine Fittings
1	PCV line T fitting
6	Duct/Hose Clamps
1	Emissions Certification Label (If Applicable)

Required Tools

Flat Head Screwdriver

T-15 Torx Screwdriver

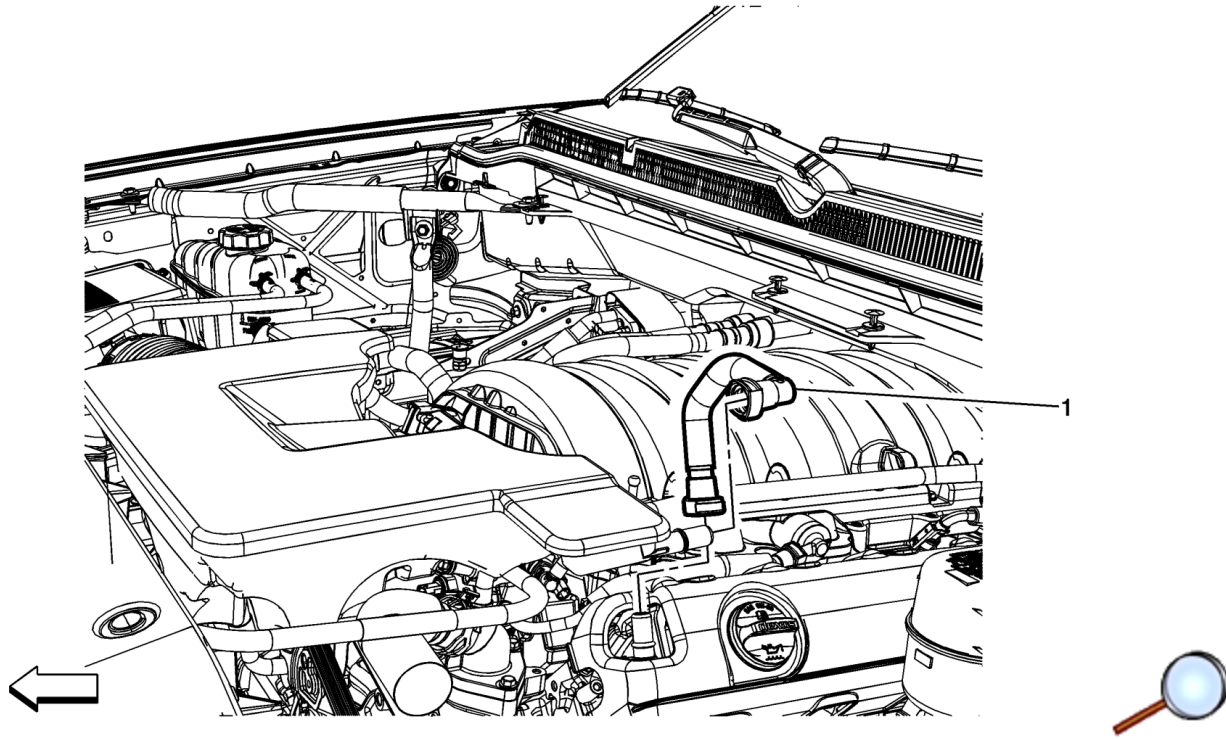
Procedure

Warning: Underhood Systems can be very hot! In order to avoid being burned, do not service the vehicle while it is still hot. Service the vehicle when it is cool.

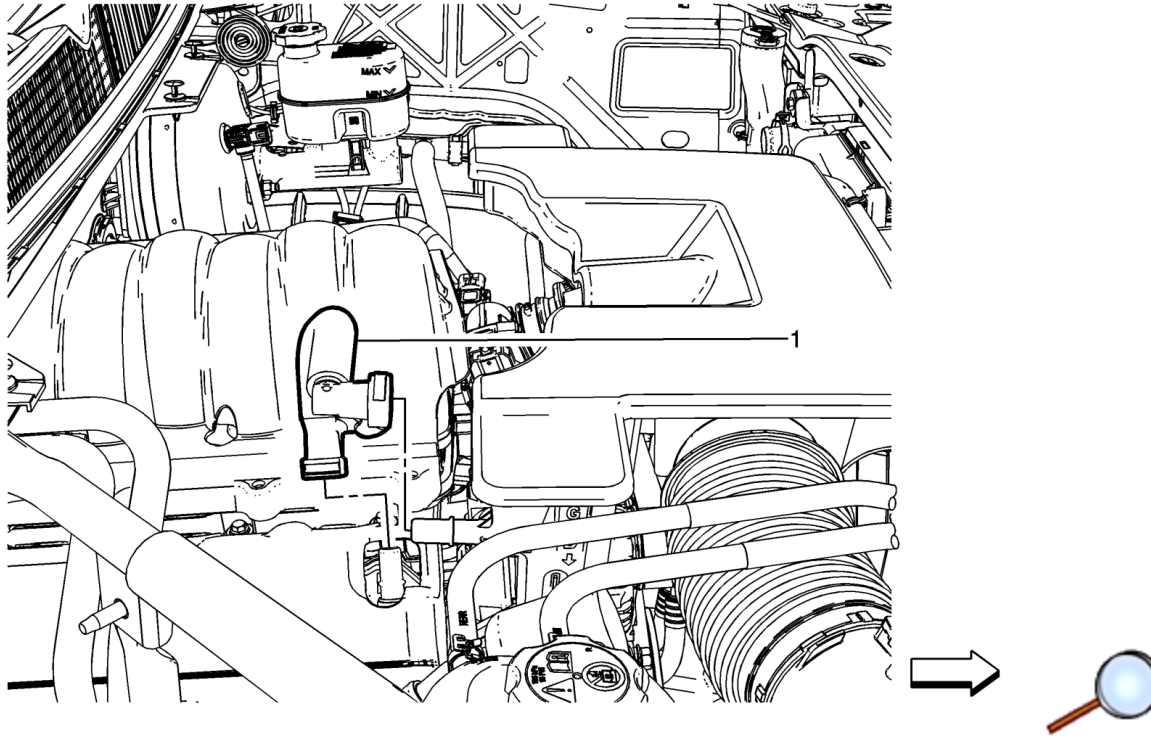
Warning: Unless directed otherwise, the ignition and start switch must be in the OFF or LOCK position, and all electrical loads must be OFF before servicing any electrical component. Disconnect the negative battery cable to prevent an electrical spark should a tool or equipment come in contact with an exposed electrical terminal. Failure to follow these precautions may result in personal injury and/or damage to the vehicle or its components.

Warning: Approved safety glasses and gloves should be worn when performing this procedure to reduce the chance of personal injury.

Remove production air cleaner outlet duct PCV lines

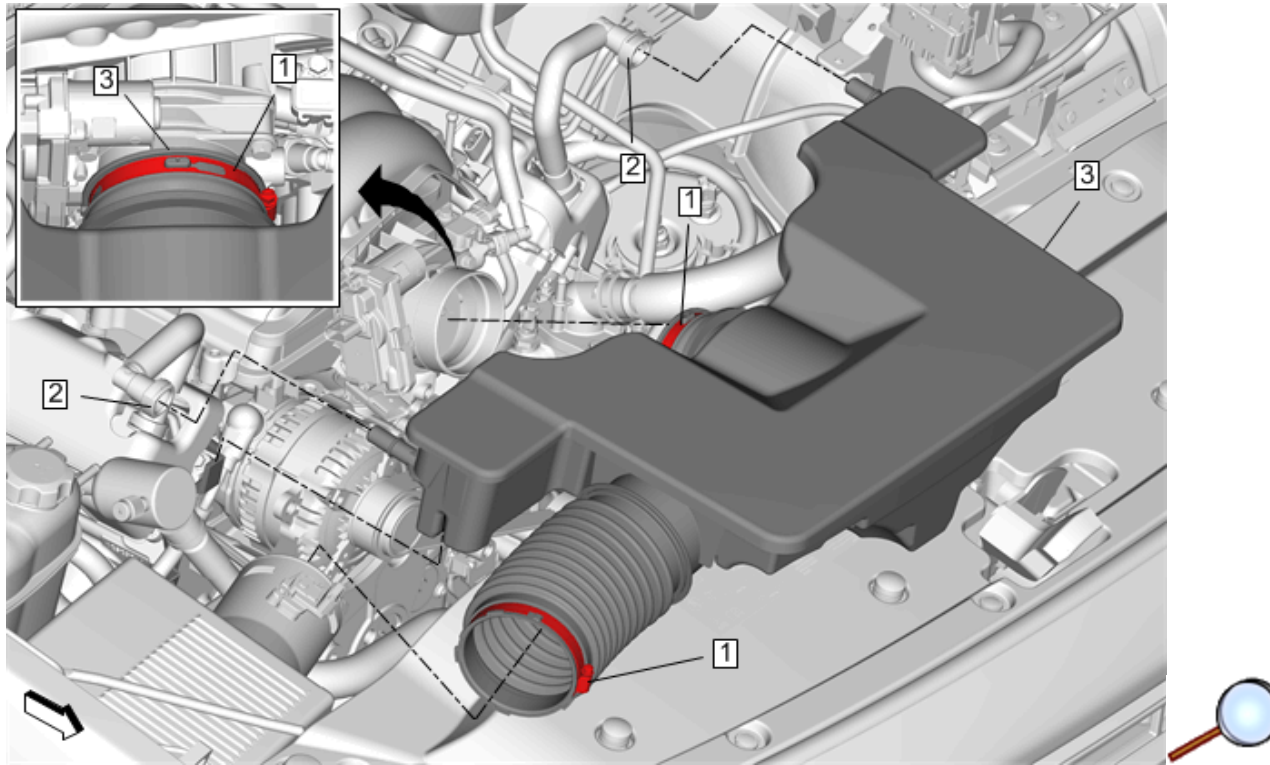


1. Remove driver side PCV line tube from valve cover and outlet tube (1).



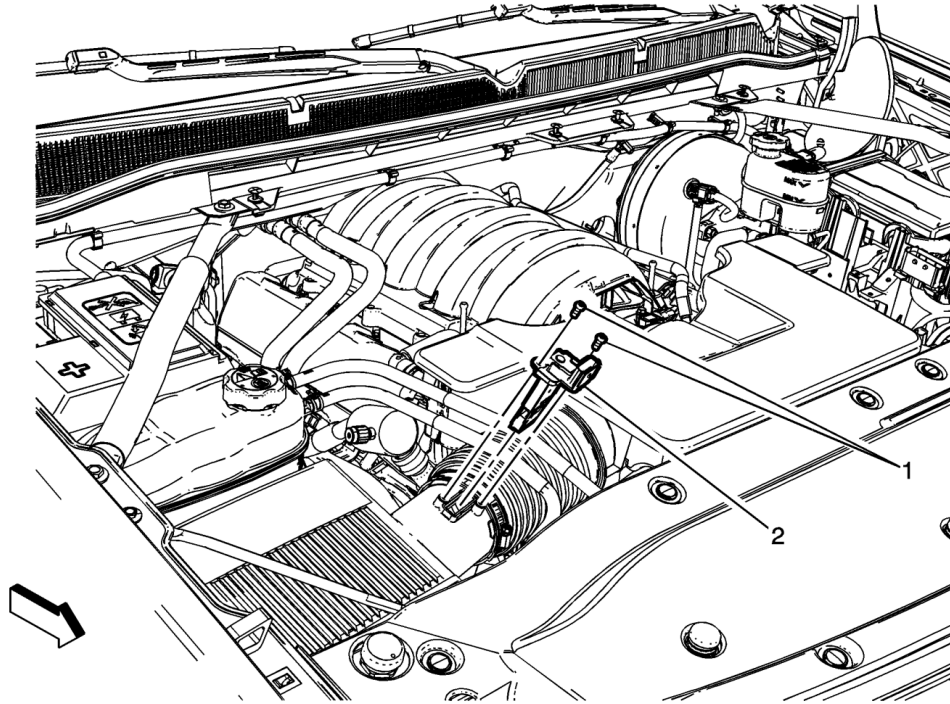
2. Remove passenger side PCV line tube from valve cover and outlet tube (1).

Remove production air cleaner outlet duct



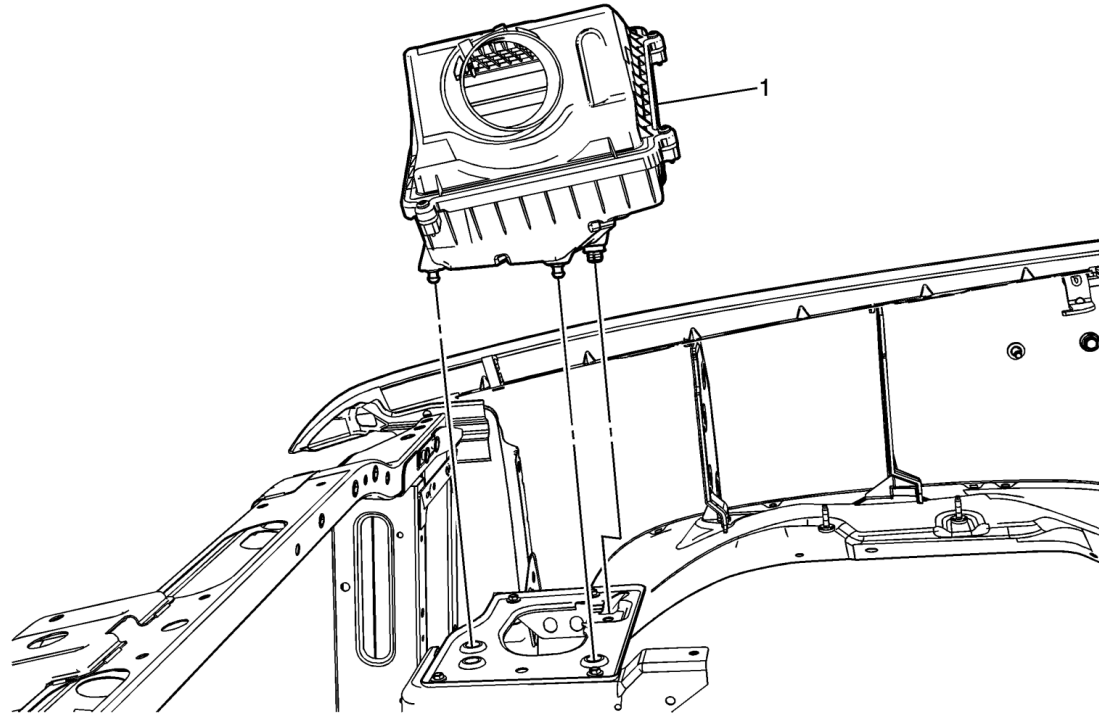
1. Loosen outlet duct clamps (1).
2. Disconnect outlet duct (3) from throttle body and air cleaner assembly and remove from vehicle.

Remove mass airflow sensor



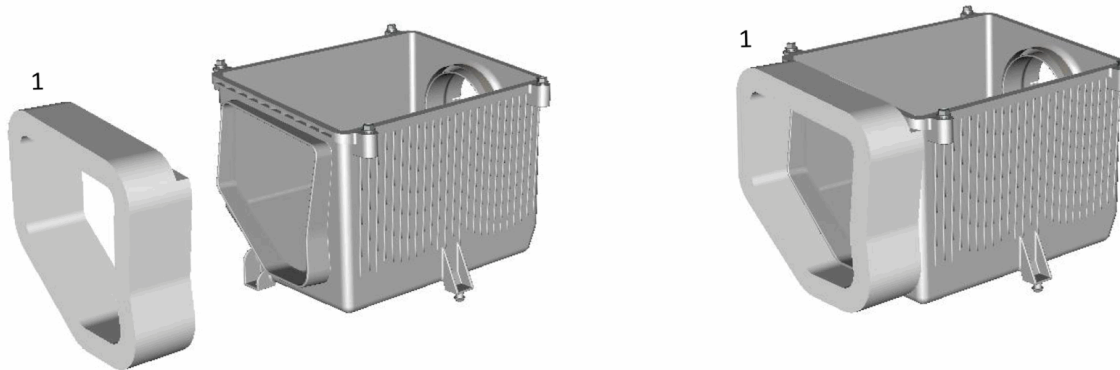
1. Unscrew the two mass airflow sensor screws (1).
2. Disconnect electrical connector (2) and place mass airflow sensor in a clean area.

Remove production air cleaner assembly

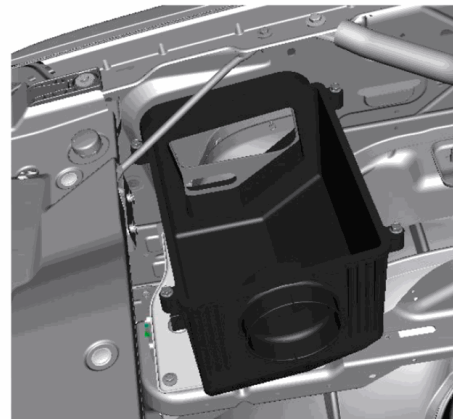
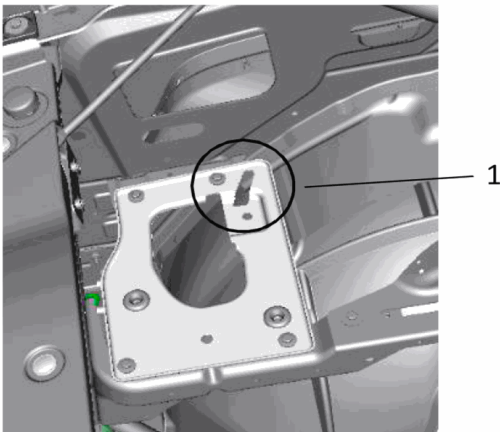


1. Unclip the MAF sensor harness retainer (1) from the air cleaner housing. Pull upward in a jerking manner in order to disengage the air cleaner housing from the insulators.
2. Pull airbox out of rubber isolators and out of vehicle.

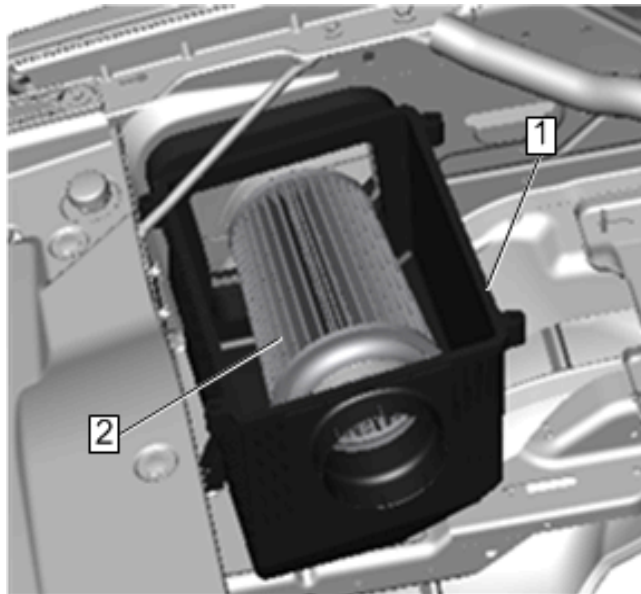
Install performance airbox into vehicle



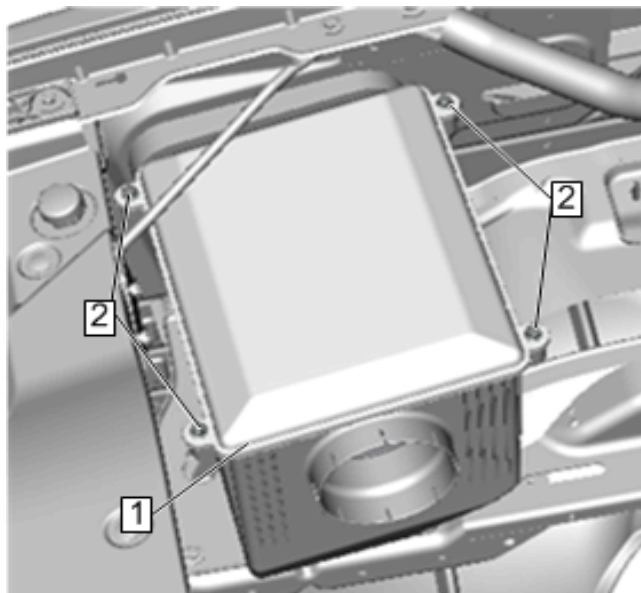
1. Remove center foam piece from outside foam piece and remove backing from outside foam piece. Center piece can be discarded.
2. Install foam piece (1) on outside end of airbox around inlet hole.



3. Set performance airbox into location. Make sure rubber isolator is in the slot in the sheet metal (1).



4. Push airbox (1) towards passenger side of vehicle and ground in a jerking manner to engage the airbox nipples to the insulators on the vehicle.
5. Install air filter (2) into box with hose clamp. Aluminum clip on air filter element should be at the bottom.



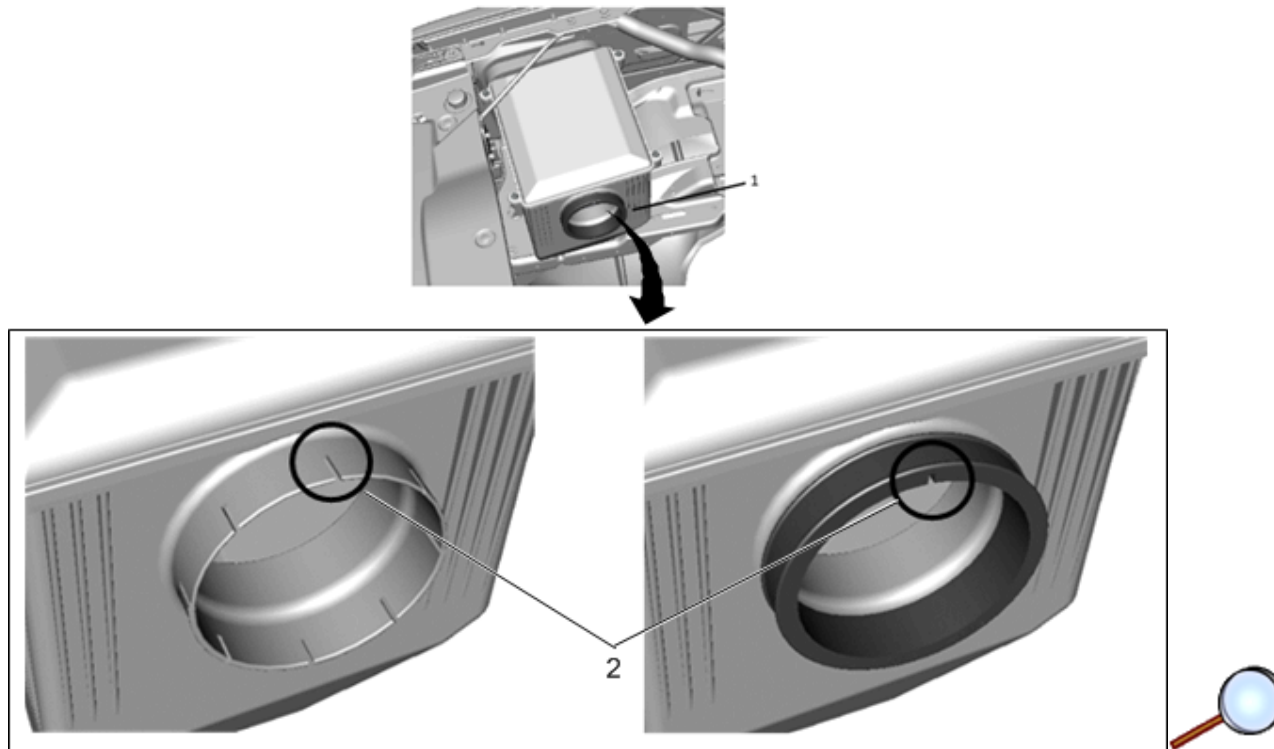
Caution: Use the correct fastener in the correct location. Replacement fasteners must be the correct part number for that application. Fasteners requiring replacement or fasteners requiring the use of thread locking compound or sealant are identified in the service procedure. Do not use paints, lubricants, or corrosion inhibitors on fasteners or fastener joint

surfaces unless specified. These coatings affect fastener torque and joint clamping force and may damage the fastener. Use the correct tightening sequence and specifications when installing fasteners in order to avoid damage to parts and systems.

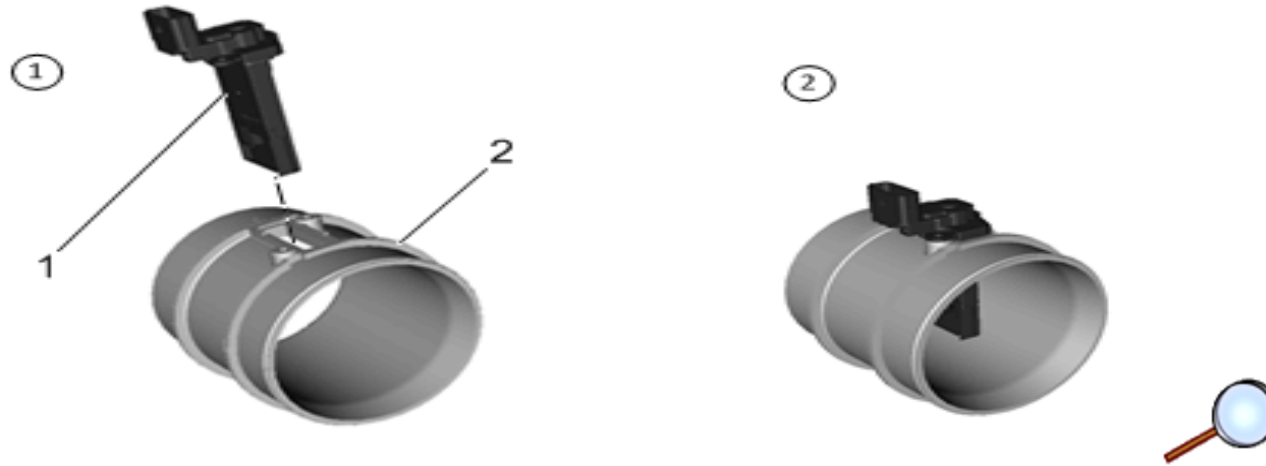
6. Install clear top (1) on airbox with four bolts (2). Torque to 2.3 N.m (20.4 lb-in)

Note: Be sure arrow and "FRONT" lettering on corner of lid are facing the front of the vehicle.

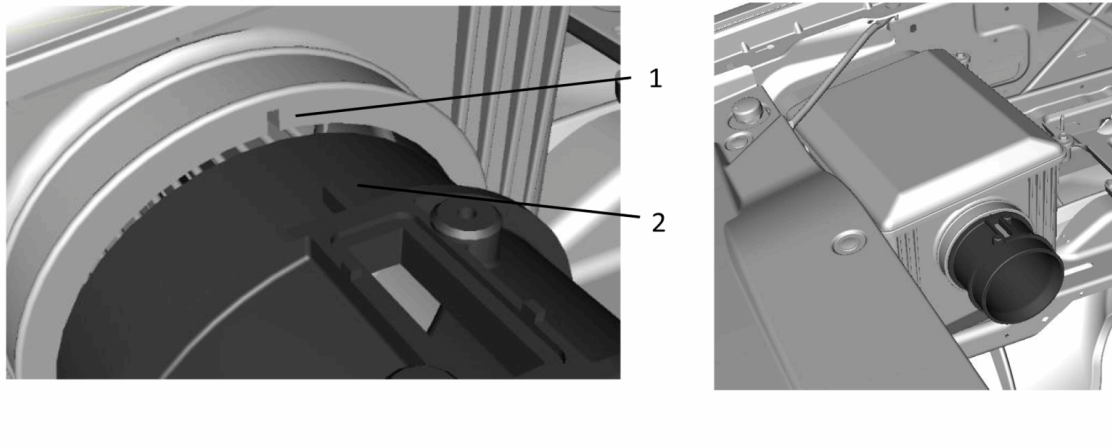
Install mass airflow (MAF) sensor tube



1. Press rubber isolator into airbox near filter outlet (1). Make sure slit in the rubber is lined up with top slot on airbox (2).



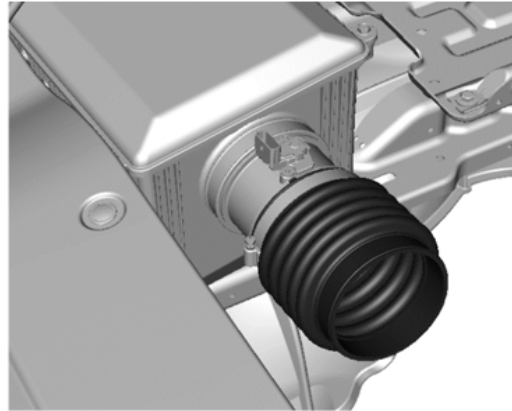
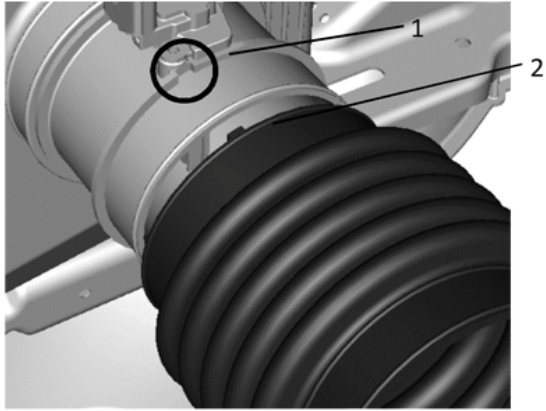
2. Install MAF sensor (1) into MAF sensor tube (2) on workbench. Torque MAF sensor screws to 1.5 N.m (13 lb-in).



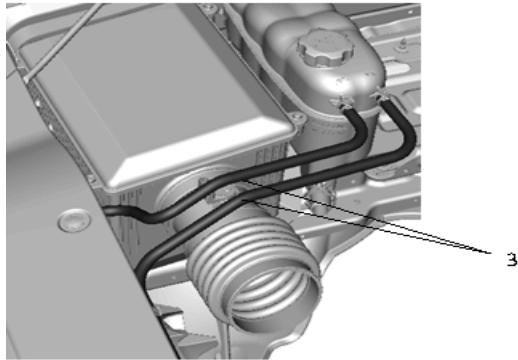
3. Press MAF sensor tube into rubber isolator. Line up key on tube (1) with slit in rubber isolator (2). Secure with hose clamp.

Note: A silicone spray or mild dish soap can be used as a lubricant to help assemble PCV fittings and lines.

4. Reconnect MAF sensor electrical connector.



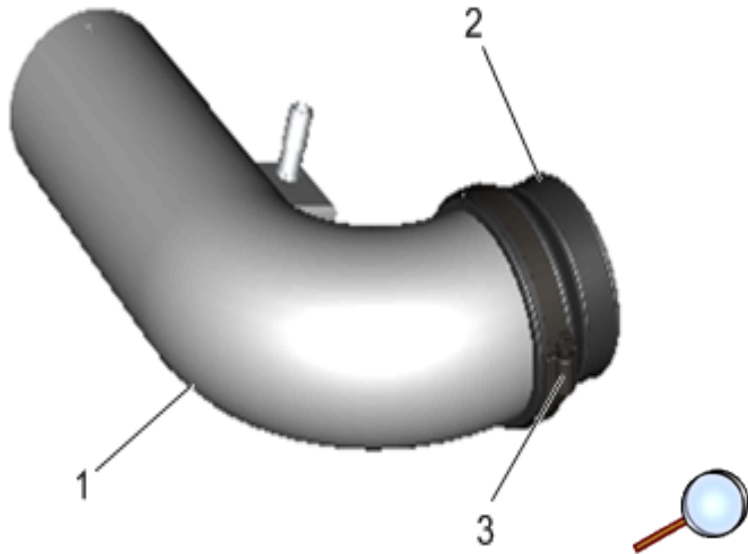
5. Install bellows on MAF sensor tube using one hose clamp. Line up keyway on bellows (2) and MAF sensor tube (1).



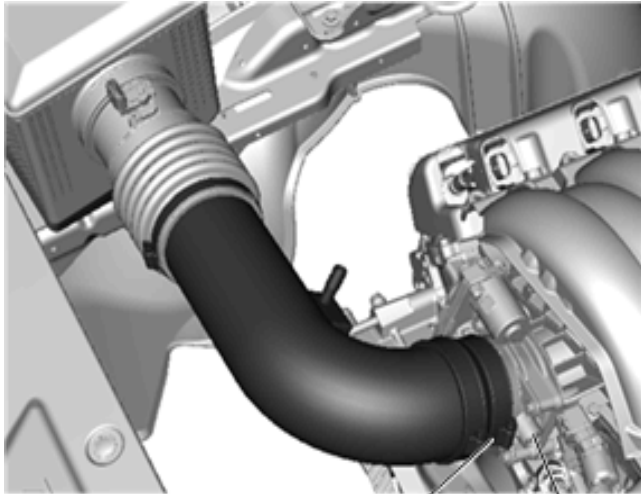
6. Ensure radiator surge tank lines (3) are above intake bellows.

Install clean air duct





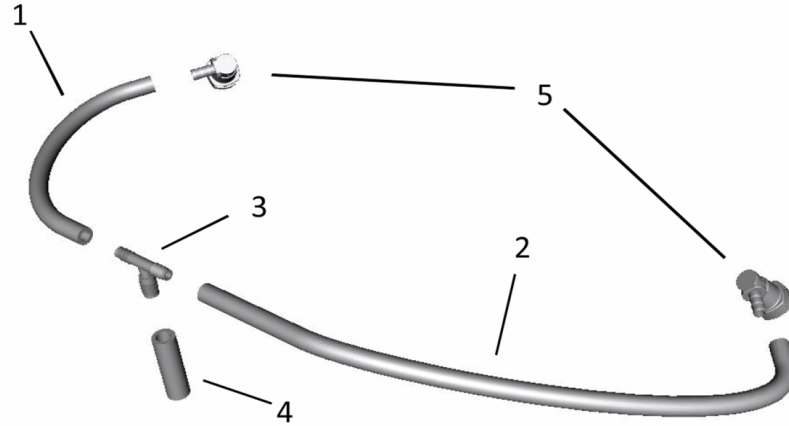
1. Install throttle body coupler (2) onto clean air duct (1) with one hose clamp (3).



2. Install clean air duct in vehicle with by connecting passenger side to bellows with one hose clamp and the coupler (1) on driver side to throttle body (2) with one hose clamp.

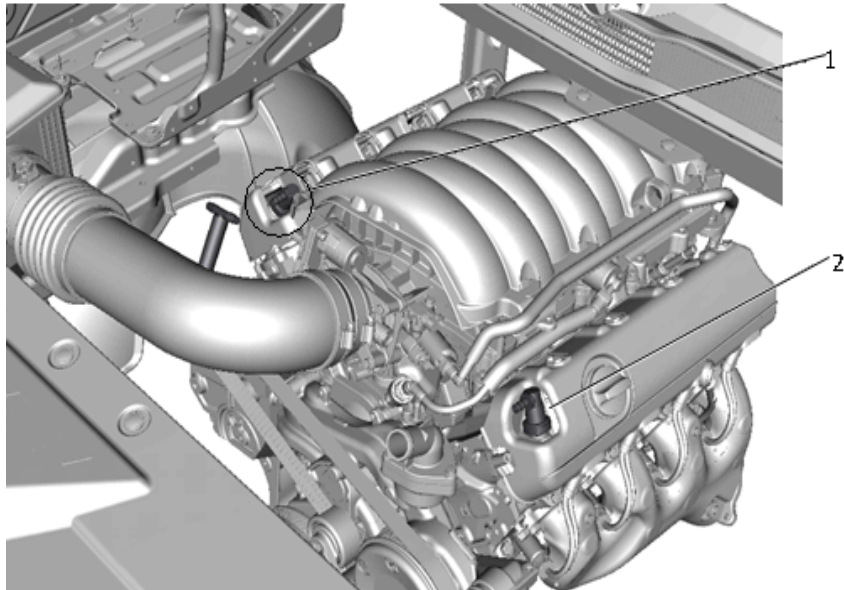
Note: Make sure the rubber coupler is fully seated on the throttle body and the cuff is not rolled under.

Install positive crankcase ventilation system

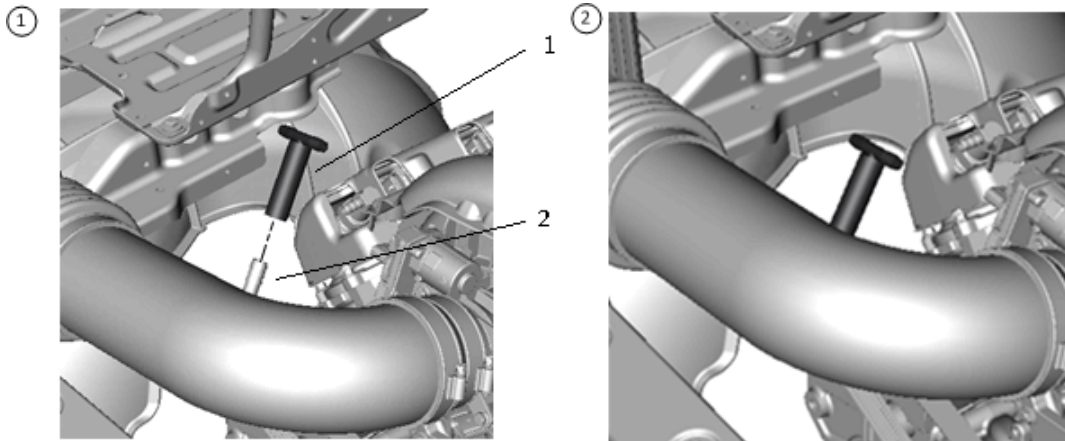


Note: A silicone spray or mild dish soap can be used as a lubricant to help assemble PCV fittings and lines.

1. Install 10.5 in. tube (1) and 20 in. tube (2) to top of T fitting (3).
2. Install 2.5 in. tube (4) to bottom of T fitting (3).
3. Install PCV clip fittings (5) to ends of 10.5 in. tube and 20 in. tube.



4. Connect 10.5 in. line side to passenger side engine crankcase vent (1). Connect 20 in. line to driver side engine crankcase vent (2).



5. Connect 2.5 in. line (1) to clean air duct PCV vent barbed fitting (2).

Install Altered Emissions Label (If applicable)

Place the new Altered Emissions Label next to the current Emission Certification Label under the hood.