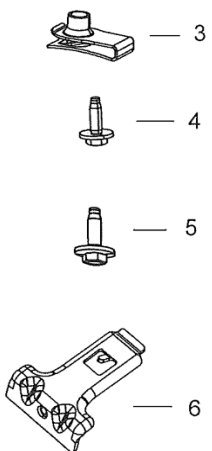
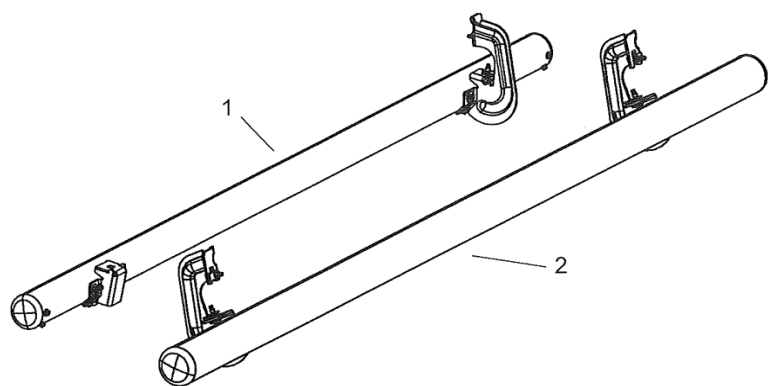


Document ID: 4587456

Rocker Panel Protector Package Installation

Installation Instructions Part Number

84114573



Kit Contents

Item	Description	Qty Extended Cab:
1	Rocker Protector Driver Side	1
2	Rocker Protector Passenger Side	1
3	M8 U-Nut	6

© 2018 General Motors. All rights reserved.

Item	Description	Qty Extended Cab:
4	M8 Bolt	6
5	M10 Bolt (Diesel Only)	1
6	Rocker Protector Upper Bracket #1 (Diesel Only)	1
7	Instruction Sheet	1

Torque Table

8mm Hardware torque to 25N•m (18 lb ft)

10mm Hardware torque to 50N•m (36 lb ft)

Tools Required

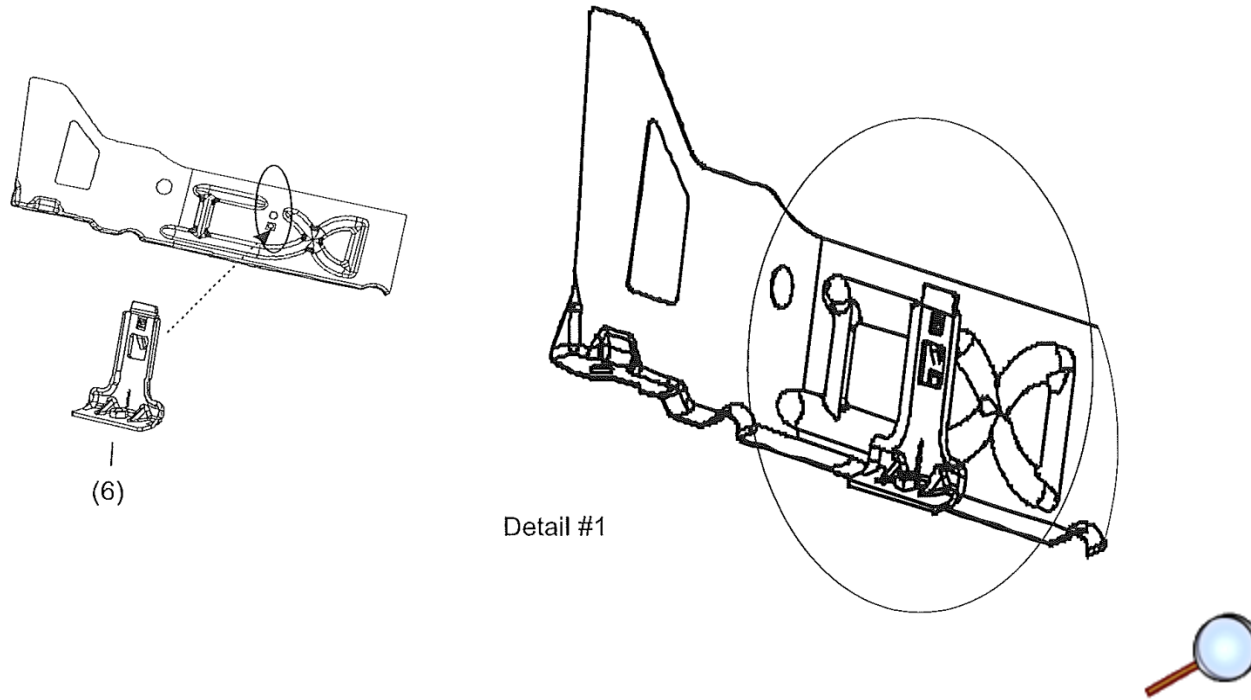
- Torque Wrench
- 13mm Socket, 15mm Socket-(Diesel Only)
- 3/8" drive Ratchet
- 3" 3/8" drive extension

Procedure

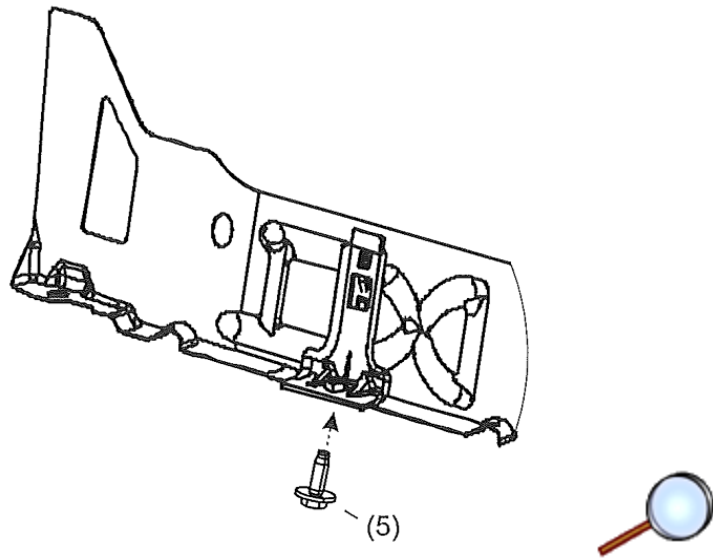
Note: Read entire instruction sheet thoroughly before starting.

Note: Left hand and right hand assemblies are identified on the bottom side of each end of the tube.

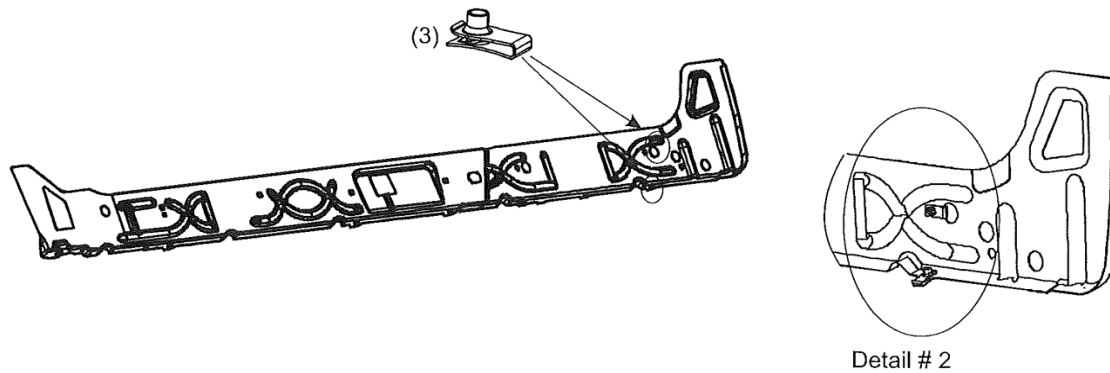
Caution: Use the correct fastener in the correct location. Replacement fasteners must be the correct part number for that application. Fasteners requiring replacement or fasteners requiring the use of thread locking compound or sealant are identified in the service procedure. Do not use paints, lubricants, or corrosion inhibitors on fasteners or fastener joint surfaces unless specified. These coatings affect fastener torque and joint clamping force and may damage the fastener. Use the correct tightening sequence and specifications when installing fasteners in order to avoid damage to parts and systems.



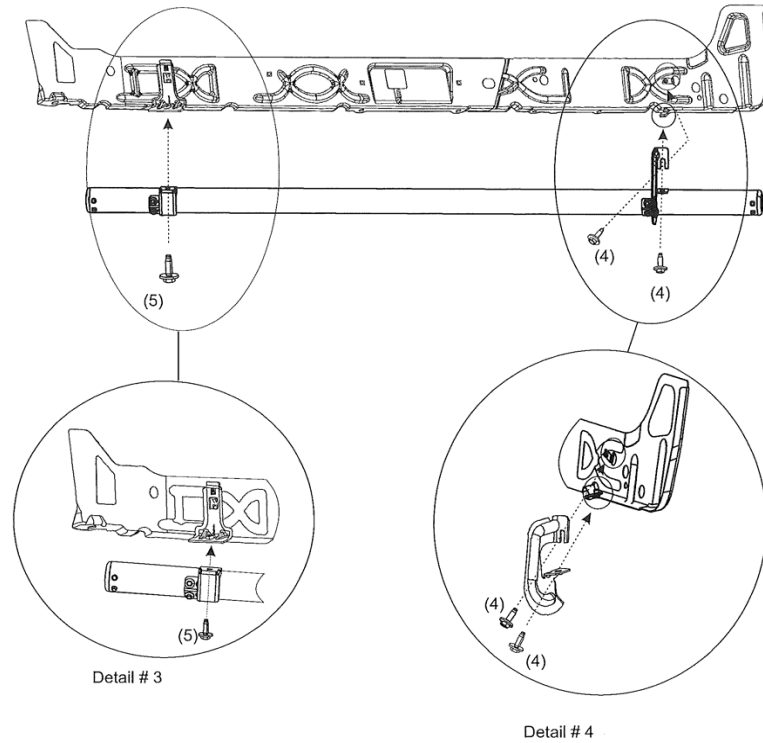
1. Position the rocker protector upper bracket (6) to the inner rocker panel and engage the hook to the hole. (Detail #1).



2. Install the M10 bolt (5) to the rocker protector upper bracket (item 6) and tighten to seat bracket in place. Tighten the M10 bolt to 50 N•m (36 lb ft)
3. Remove the M10 bolt (5) leaving the seated rocker protector upper bracket (item 6) fully in place.



4. Install U-nuts (3) onto existing holes in pinch flange and inner rocker panel. Refer to graphic for locations and orientation of U-nuts (3). Install U-nuts (3) with the threads up on pinch flange and with threads inside of the inner rocker panel. On some vehicles it may be necessary to remove and discard hole plugs to install U-nuts.



5. Position the right side rocker protector to the inner rocker panel and loosely secure with the rear M8 bolts (4).
6. While holding the rocker protector upper bracket in position, install the M10 bolts (5).

Note: Do not disengage hook on rocker protector upper bracket (item 6) while tightening bolts.

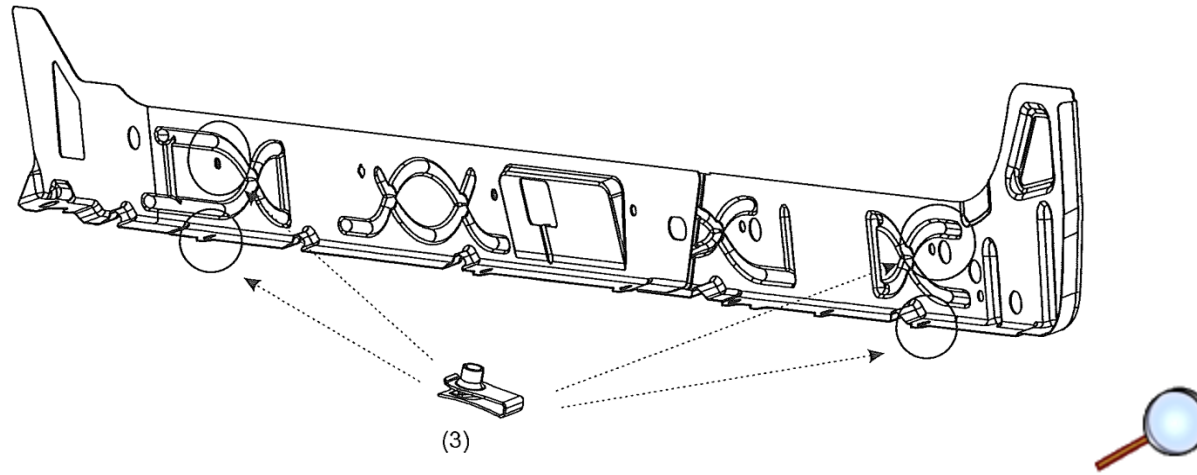
Tighten

Tighten the M10 bolts to 50 N•m (36 lb ft) **Tighten**

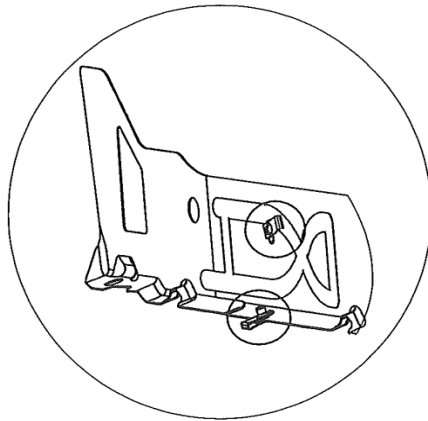
Tighten the M8 bolts to 25 N•m (18 lb ft)

7. Verify correct torque on all hardware.

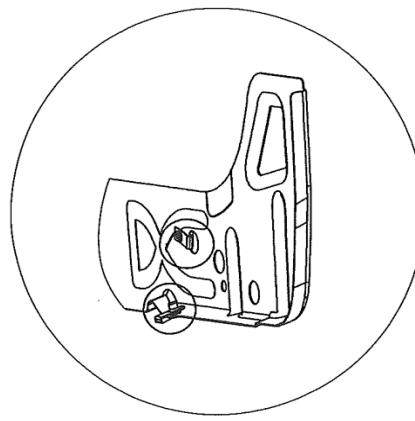
Gasoline Vehicles (Left and Right Side) and (Left Side Diesel)



1. Install U-nuts (3) onto existing holes in pinch flange and inner rocker panel.

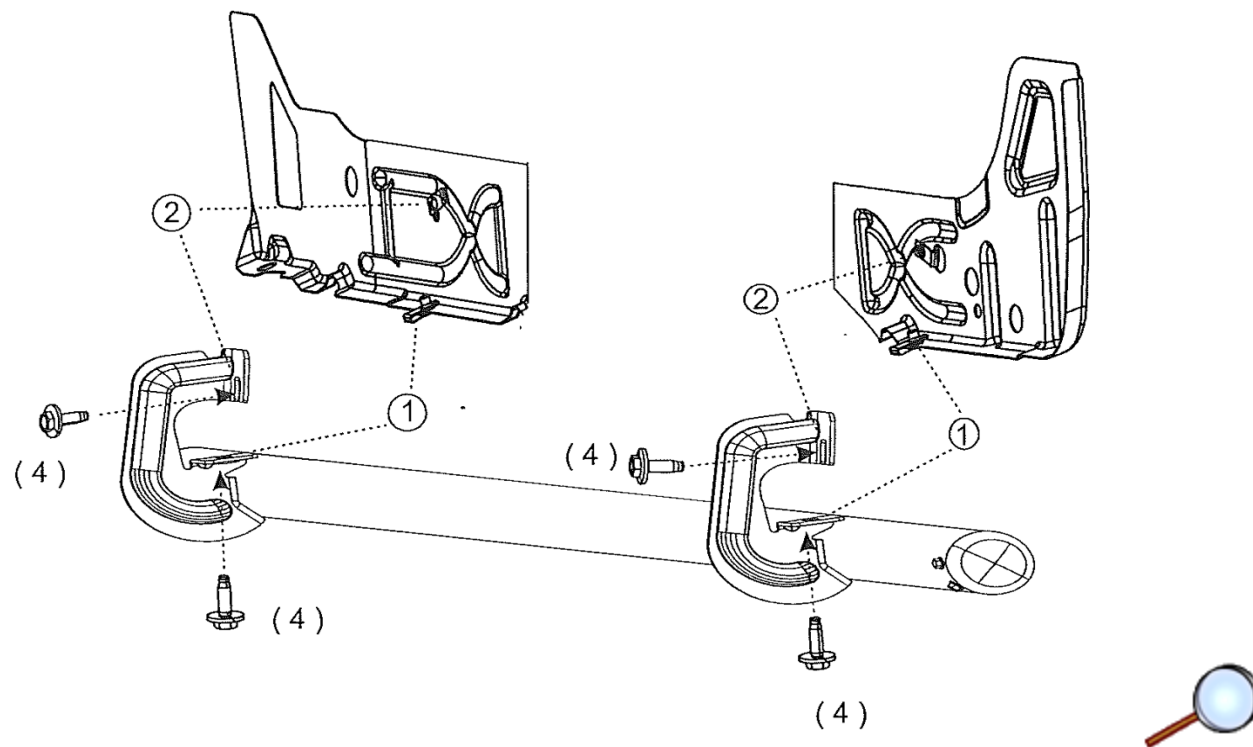


Detail # 5



Detail # 6

2. Refer to graphic for locations and orientation. Install U-nuts with the threads up on pinch flange and with the threads inside of the inner rocker panel. On some vehicles it may be necessary to remove and discard hole plugs to install the U-nuts.



3. Position the left side rocker protector to the inner rocker panel and secure by hanging front bracket in upper slot with loosely installed M8 bolt (4). Then hang the rear bracket loosely install M8 bolt (4).
4. From underneath, loosely insert the M8 bolt (4) through bracket, rocker panel, and into U-nut (3) into position. Repeat for right side.
5. Loosely insert M8 bolt (4) through bracket and into U-nut (3) in upper rocker panel position (2).
6. Tighten the M8 bolts (4) in lower positions to 25 N•m (18 lb ft).
7. Repeat step 6 for the upper positions. Tighten bolts to 25 N•m (18 lb ft).
8. Repeat steps 1 through 7 for passenger side tubular assist step assembly, (Gasoline Vehicles Only).

9. Verify correct torque on all hardware.

