

Front and Rear Side Door Sill Trim Plate Kit Installation (Non Lighted Sill Plate)

[Installation Instructions Part Number](#)

19202371

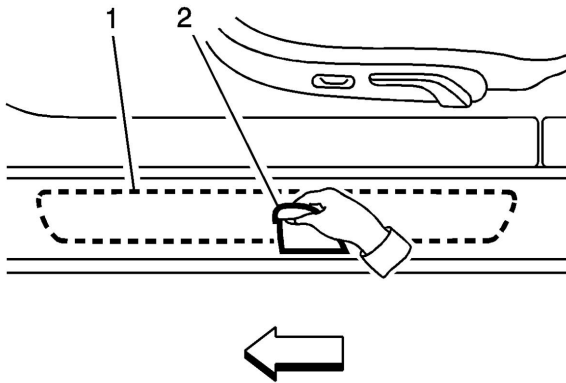
Kit Contents

Qty	Description
2	Plate, Door Sill Front
2	Plate, Door Sill Rear
1	Instruction Sheet
2	Alcohol Prep Pads Note: Verify all parts are present

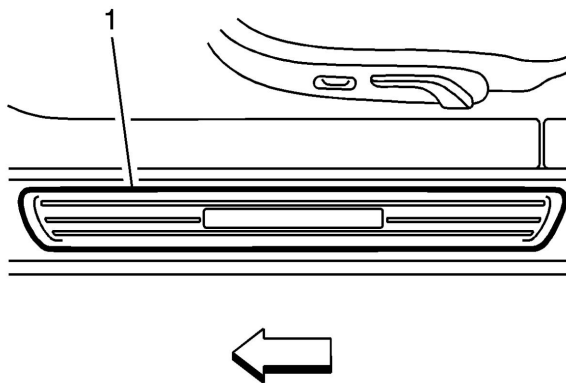
Preparation – Before Installation

- After opening the kit, check to see if any parts are missing and that the product is not damaged.
- This product should be installed with proper installation tools.
- Install this product while observing all warning and precautions stated in these instructions.
- VERY IMPORTANT: Begin with a thoroughly washed vehicle.
- Ambient temperature of sill plates and vehicle must be 70°F to 80°F (21°C to 26°C) at the time of installation and for two hours after.
- Do not high pressure wash for twenty-four hours.

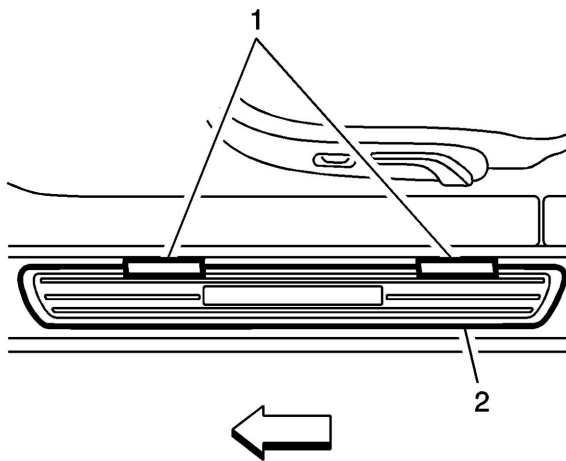
[Installation Procedure](#)



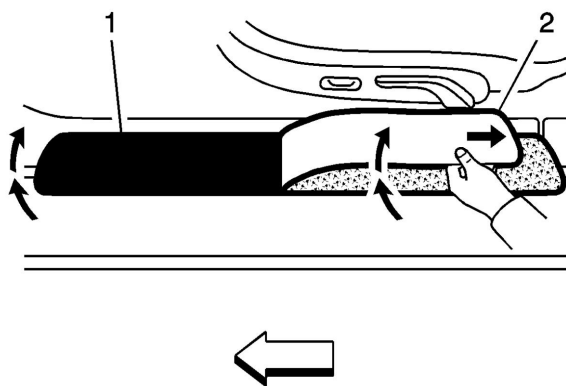
1. Remove existing production sill plates (1) as required.
2. Remove residual adhesive using VMP naphtha.
3. Wipe area where sill plate is to be applied using supplied alcohol prep pad (2).



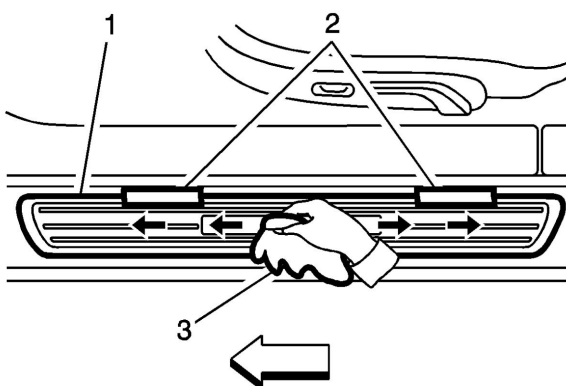
4. Align the sill plate decal (1) into proper position.



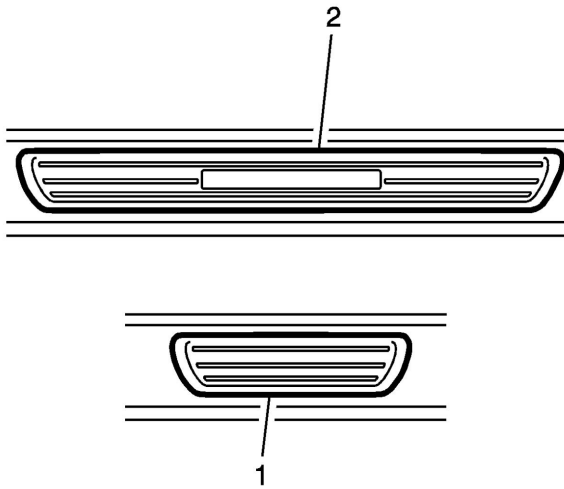
5. Apply masking tape (1) across the top of the part and tape sill plate (2) into position.



6. Use tape as "hinge" to flip sill plate up (1), remove liner (2).



7. Carefully flip sill plate (1) down. Press firmly in center with soft cloth (3), squeegeeing from the center outward.
8. Remove masking tape (2).



9. Repeat steps 1 through 8 for rear (1) and opposite side (2) of vehicle.