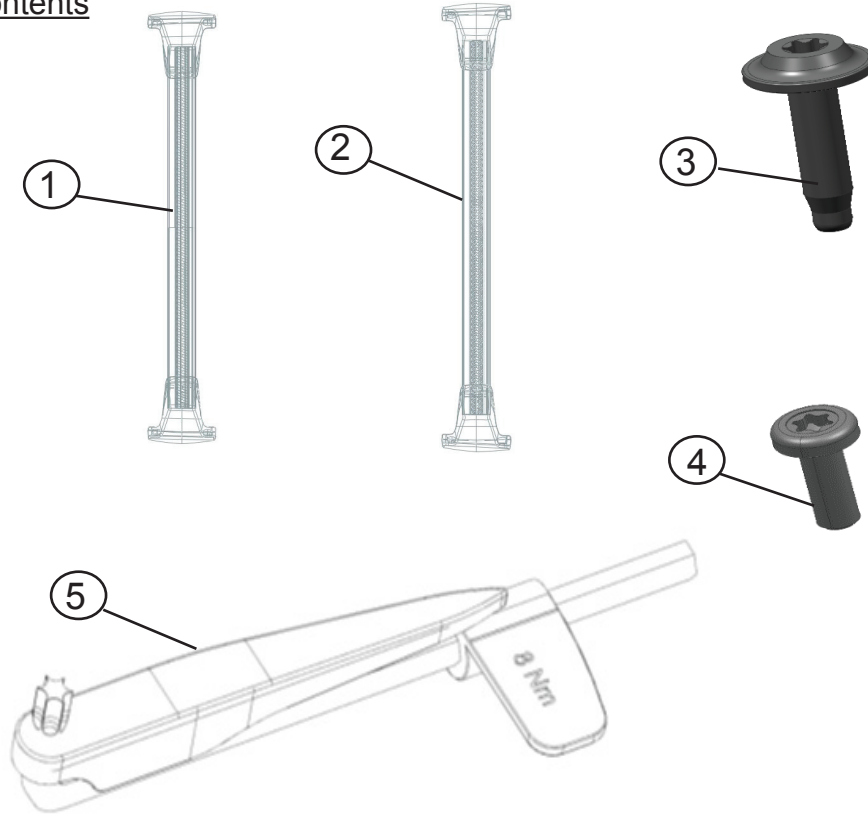


# C1UL Cross Rails Installation Instructions

Kit Contents



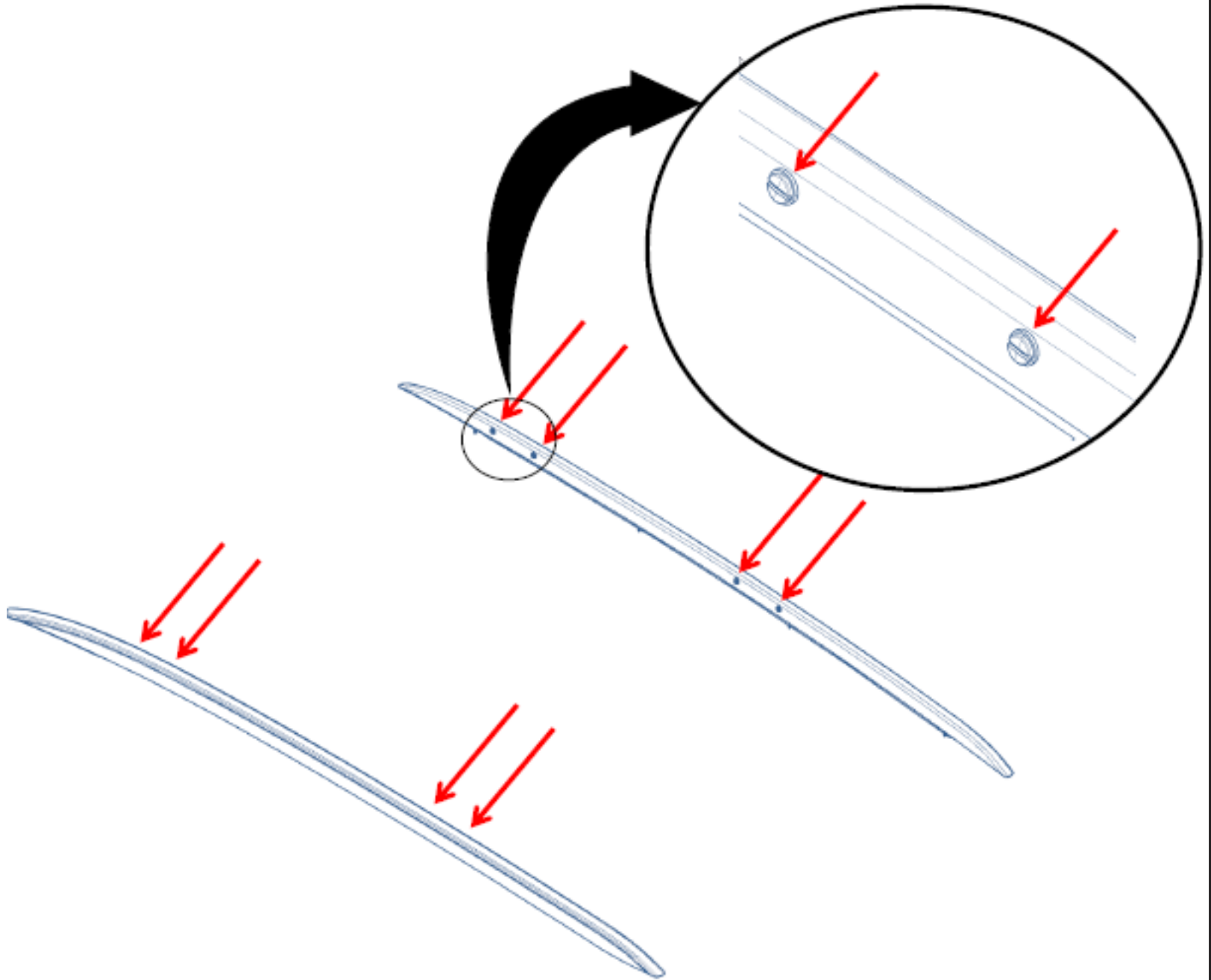
ITEM	DESCRIPTION	QTY
1	C1UL FRONT CROSS RAIL	1
2	C1UL REAR CROSS RAIL	1
	HARDWARE KIT	1
3	M6 X 25 BOLT	8
4	M6 X 16 BOLT	4
5	TORQUE WRENCH	1

Tools Required

- Flat Head Screw Driver
- Pry tool

DATE	REVISION	AUTH	DR
15MY15	Initial Release - Timothy Langan	2285239	
200C15	Revision - Timothy Langan	2400613	

1. Remove 8 plugs from roof rails by twisting the plugs counter clockwise by hand or remove the plug by using a pry tool.



**Cross Rails - Luggage Carrier**

REV 200C15

PART NO. **23438040**

SHEET **2** OF **12**

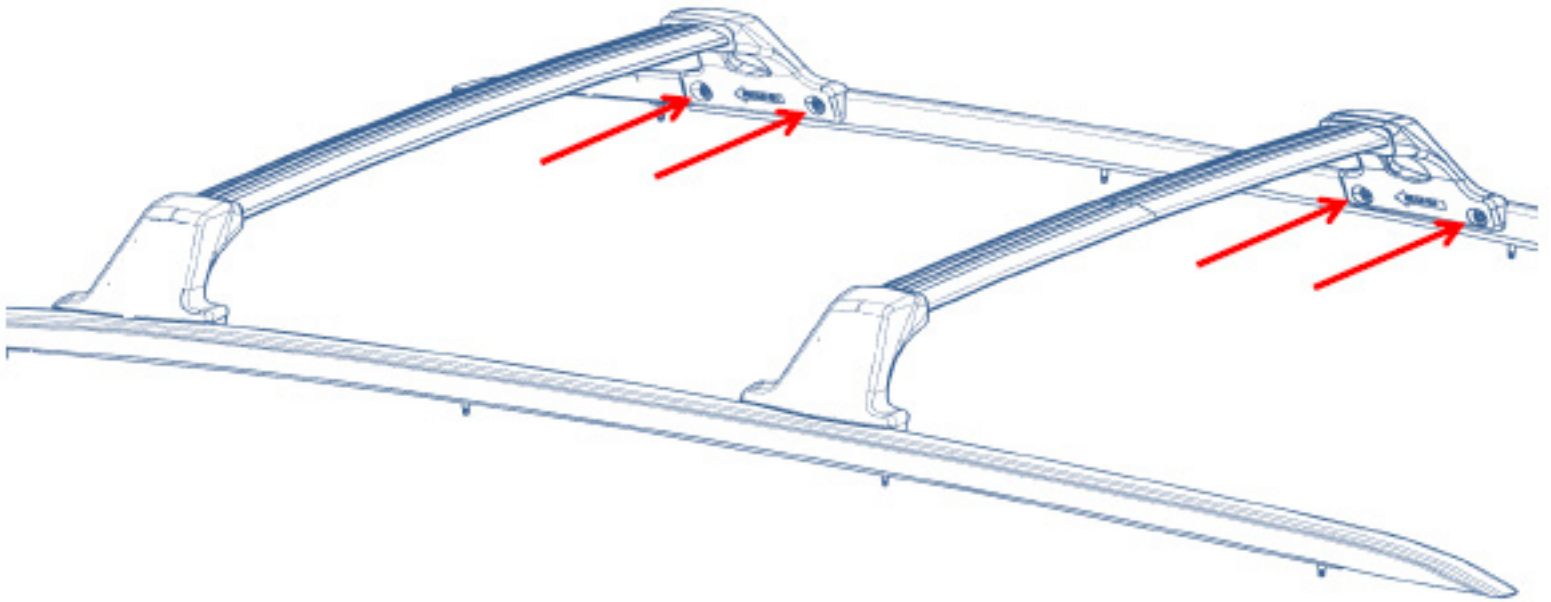
ALL INFORMATION WITHIN ABOVE BORDER TO BE PRINTED EXACTLY AS SHOWN ON 8.5 x 11 WHITE 16 POUND NON-BOND RECYCLABLE PAPER. PRINT ON BOTH SIDES, EXCLUDING TEMPLATES. TO BE UNITIZED IN ACCORDANCE WITH GM SPECIFICATIONS.

DATE	REVISION	AUTH	DR
15MY15	Initial Release - Timothy Langan	2285239	
200C15	Revision - Timothy Langan	2400613	

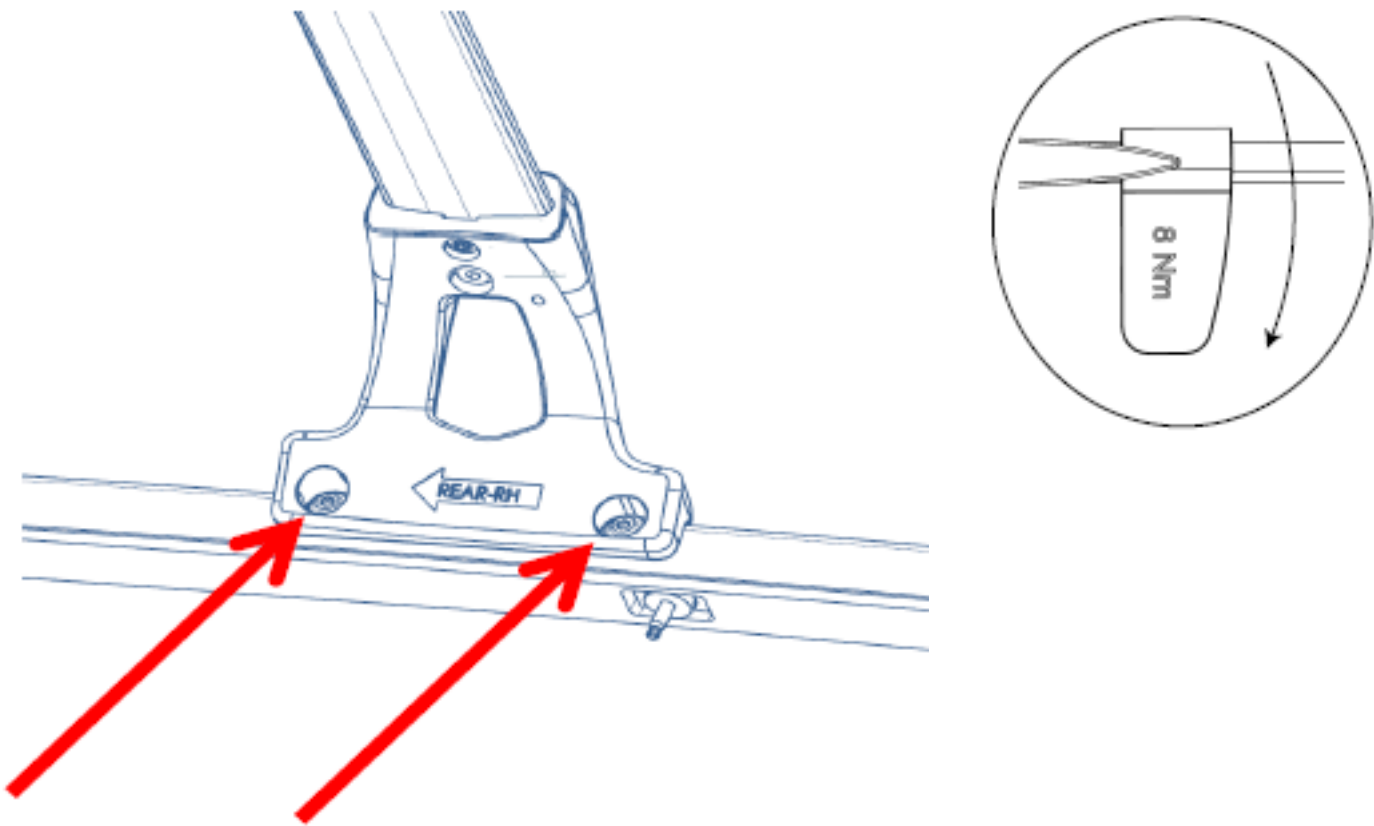
TITLE	INSTALLATION INSTRUCTIONS		
Cross Rails - Luggage Carrier			
PART NO.	<b>23438040</b>	SHEET	<b>2</b> OF <b>12</b>

- Line up the holes from item #1 and #2 (Cross Rails) with the holes in the Side Rails. Install item #3 (8-M6 x 25 bolts ) through the Cross Rails and into the Roof Rails.

\*Note the arrows on the Cross Rails face the front of the vehicle.



- Use item #5 (Torque wrench) to tighten all 8 of item #3 (m6 x 25 bolts). Torque the wrench until the needle lines up with the line to assure you have the proper torque. (8 Nm)



**Cross Rails - Luggage Carrier**

REV 200C15

PART NO. **23438040**

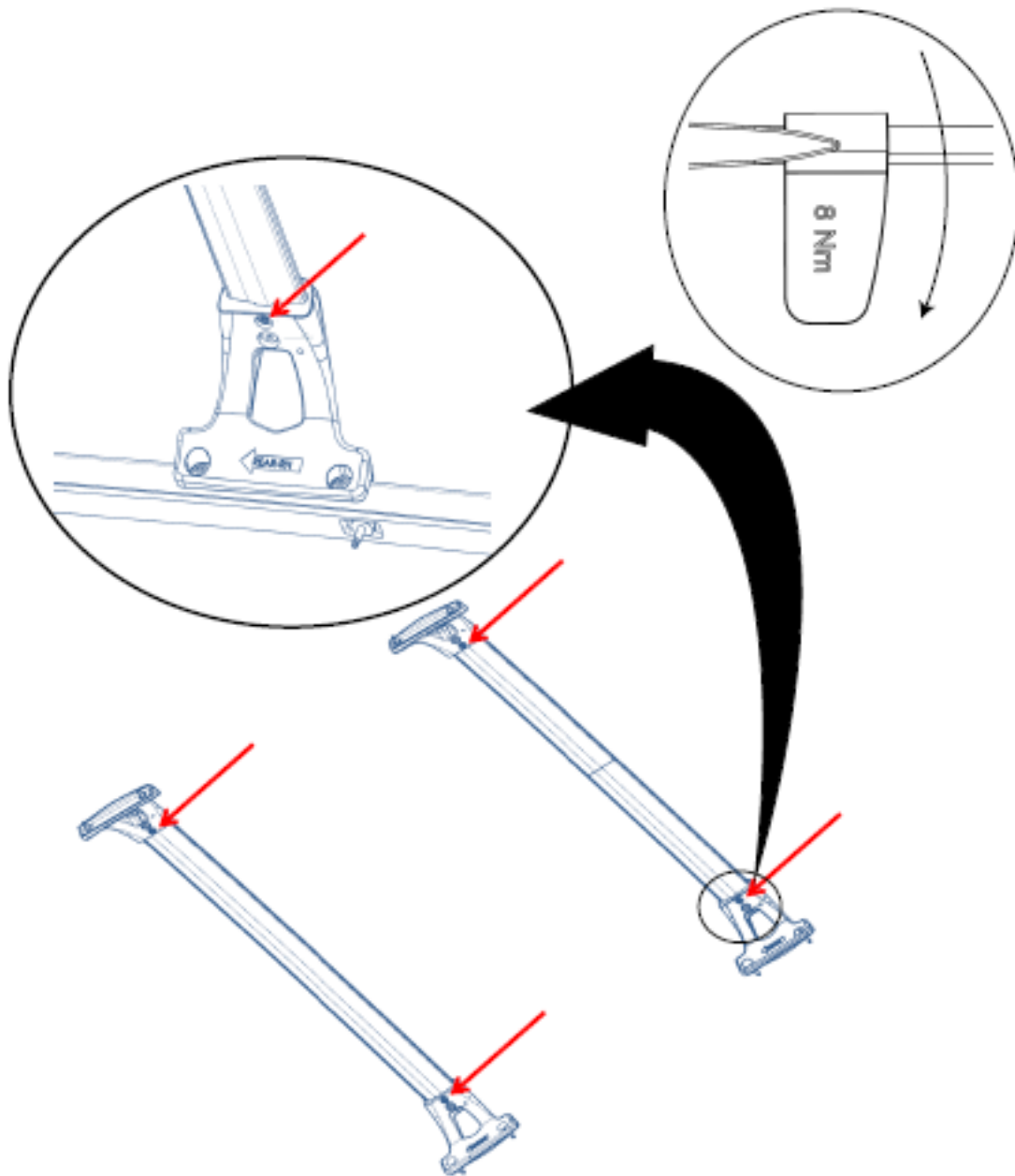
SHEET **3** OF **12**

ALL INFORMATION WITHIN ABOVE BORDER TO BE PRINTED EXACTLY AS SHOWN ON 8.5 x 11 WHITE 16 POUND NON-BOND RECYCLABLE PAPER. PRINT ON BOTH SIDES, EXCLUDING TEMPLATES. TO BE UNITIZED IN ACCORDANCE WITH GM SPECIFICATIONS.

DATE	REVISION	AUTH	DR
15MY15	Initial Release - Timothy Langan	2285239	
200C15	Revision - Timothy Langan	2400613	

TITLE	
<b>INSTALLATION INSTRUCTIONS</b>	
<b>Cross Rails - Luggage Carrier</b>	
PART NO.	<b>23438040</b>
SHEET	<b>3</b> OF <b>12</b>

4. Install item #4 (2-M6 x 16 bolts) into the available location on the underside of each Cross Rail.



5. Tighten item #4 (M6 x 16 bolts) with item #5 (Torque wrench). Torque the wrench until the needle lines up with the line to assure you have the proper torque. (8 Nm)

Cross Rails - Luggage Carrier

REV 200C15

PART NO.

23438040

SHEET

4 OF 12

ALL INFORMATION WITHIN ABOVE BORDER TO BE PRINTED EXACTLY AS SHOWN ON 8.5 x 11 WHITE 16 POUND NON-BOND RECYCLABLE PAPER. PRINT ON BOTH SIDES, EXCLUDING TEMPLATES. TO BE UNITIZED IN ACCORDANCE WITH GM SPECIFICATIONS.

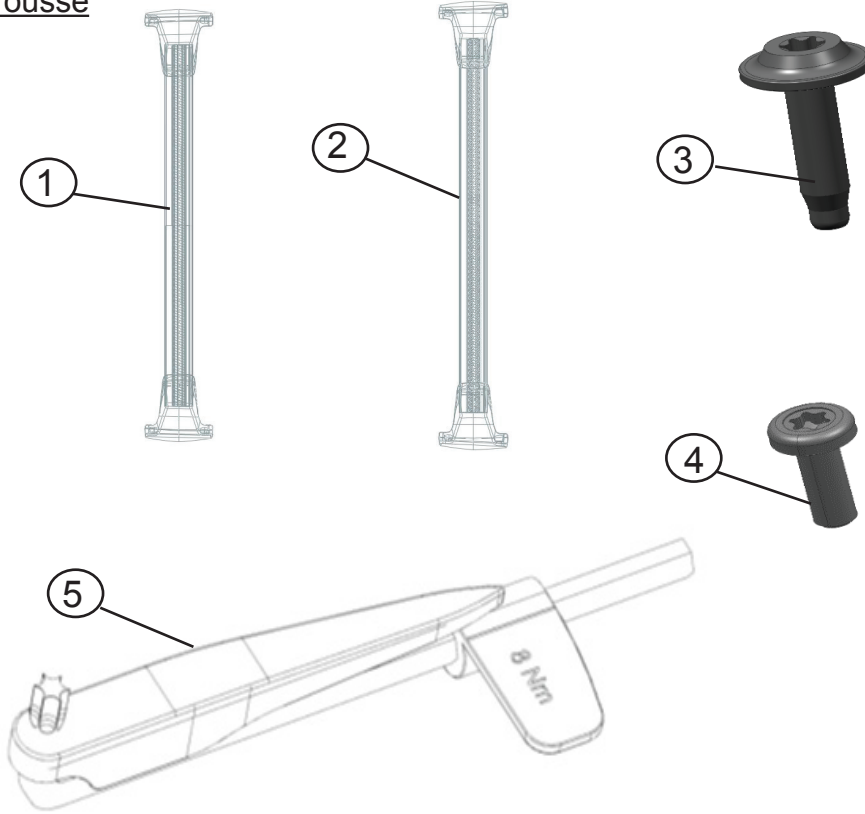
DATE	REVISION	AUTH	DR
15MY15	Initial Release - Timothy Langan	2285239	
200C15	Revision - Timothy Langan	2400613	

TITLE	INSTALLATION INSTRUCTIONS		
	Cross Rails - Luggage Carrier		
PART NO.	23438040	SHEET	4 OF 12

# Traverses C1UL

## Instructions d'installation

Contenu de la trousse



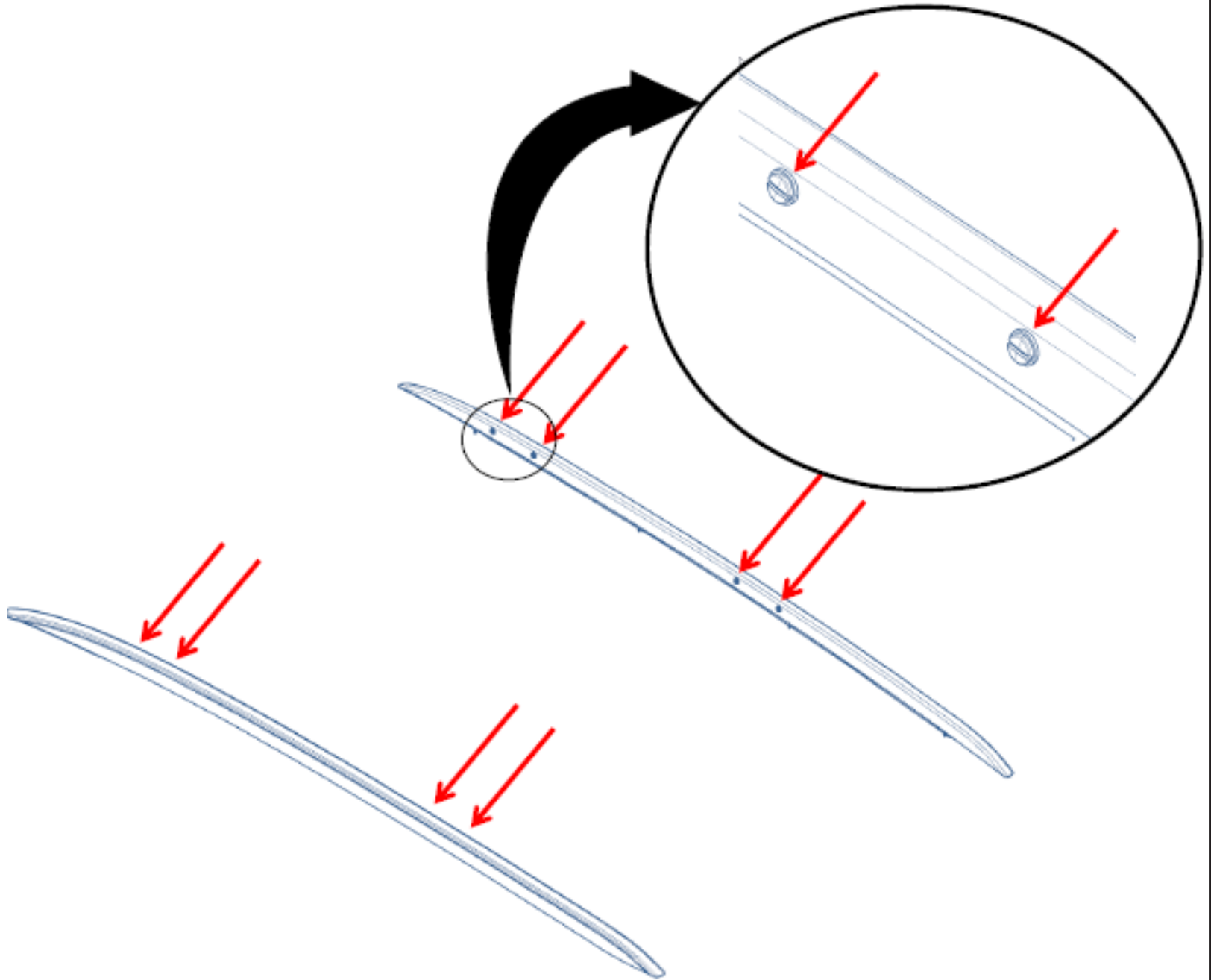
ARTICLE	DESCRIPTION	QUANTITÉ
1	TRAVERSE AVANT C1UL	1
2	TRAVERSE ARRIÈRE C1UL	1
	TROUSSE DE QUINCAILLERIE	1
3	BOULON M6 X 25	8
4	BOULON M6 X 16	4
5	CLÉ DYNAMOMÉTRIQUE	1

Outils nécessaires

- Tournevis à tête plate
- Outil pour faire effet de levier

DATE	REVISION	AUTH	DR
15MY15	Initial Release - Timothy Langan	2285239	
200C15	Revision - Timothy Langan	2400613	

1. Retirer 8 bouchons des rails de toit en les tournant dans le sens anti-horaire à la main ou déposer le bouchon avec un levier.



Cross Rails - Luggage Carrier

REV 200C15

PART NO. **23438040**

SHEET **6** OF **12**

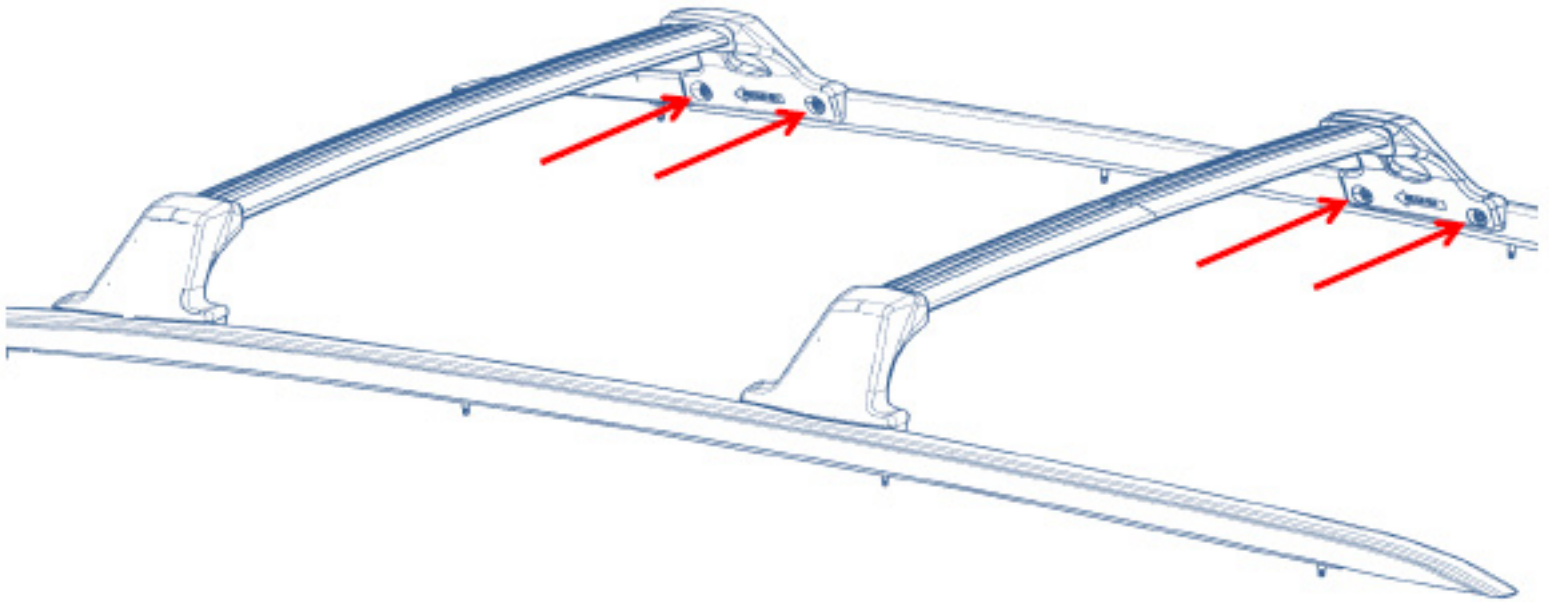
ALL INFORMATION WITHIN ABOVE BORDER TO BE PRINTED EXACTLY AS SHOWN ON 8.5 x 11 WHITE 16 POUND NON-BOND RECYCLABLE PAPER. PRINT ON BOTH SIDES, EXCLUDING TEMPLATES. TO BE UNITIZED IN ACCORDANCE WITH GM SPECIFICATIONS.

DATE	REVISION	AUTH	DR
15MY15	Initial Release - Timothy Langan	2285239	
200C15	Revision - Timothy Langan	2400613	

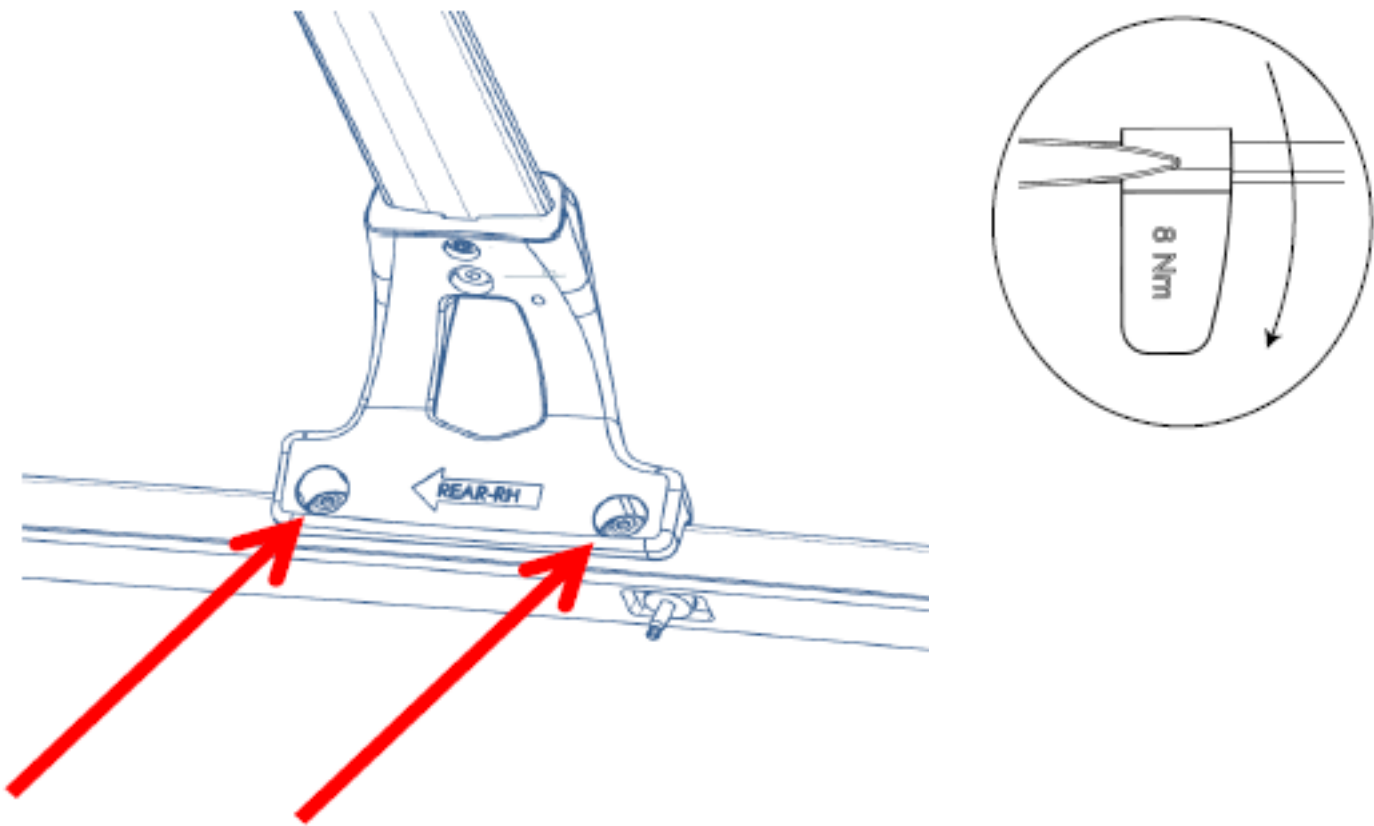
TITLE	PART NO.	SHEET	OF
<b>INSTALLATION INSTRUCTIONS Cross Rails - Luggage Carrier</b>	<b>23438040</b>	<b>6</b>	<b>12</b>

2. Aligner les trous des articles #1 et #2 (Traverses), avec les trous dans les Rails latéraux. Installer l'article #3 (8-M6 x 25 boulons) à travers les Traverses et jusque dans les Longérons du toit.

\*Noter que les flèches sur les Traverses font face au devant du véhicule.



3. Utiliser l'article #5 (clé dynamométrique), afin d'aligner les 8 articles #3 (M6 x 25 boulons). Serrer la clé, jusqu'à ce que l'aiguille s'aligne avec la ligne, pour assurer le bon couple de serrage (8 Nm).



**Cross Rails - Luggage Carrier**

REV 200C15

PART NO. **23438040**

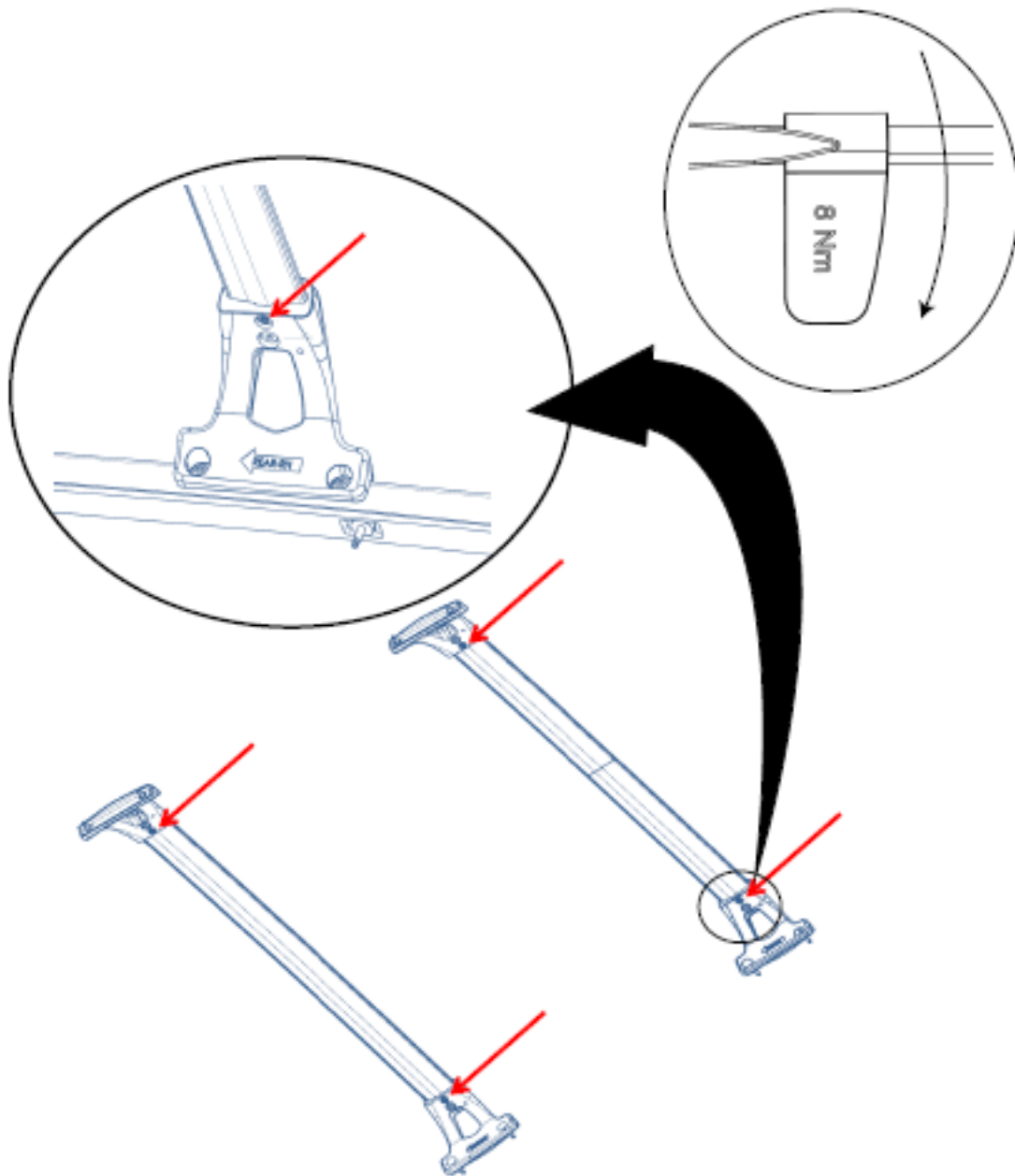
SHEET **7** OF **12**

ALL INFORMATION WITHIN ABOVE BORDER TO BE PRINTED EXACTLY AS SHOWN ON 8.5 x 11 WHITE 16 POUND NON-BOND RECYCLABLE PAPER. PRINT ON BOTH SIDES, EXCLUDING TEMPLATES. TO BE UNITIZED IN ACCORDANCE WITH GM SPECIFICATIONS.

DATE	REVISION	AUTH	DR
15MY15	Initial Release - Timothy Langan	2285239	
200C15	Revision - Timothy Langan	2400613	

<b>INSTALLATION INSTRUCTIONS</b>	
<b>Cross Rails - Luggage Carrier</b>	
PART NO.	<b>23438040</b>
SHEET	<b>7</b> OF <b>12</b>

4. Installer l'article #4 (2-M6 x 16 boulons) dans l'emplacement disponible sur le dessous de chaque Traverse.



5. Serrer l'article #4 (M6 x 16 boulons) avec l'article #5 (clé dynamométrique).  
Serrer la clé, jusqu'à ce que l'aiguille s'aligne avec la ligne, pour assurer le bon couple de serrage (8 Nm).

Cross Rails - Luggage Carrier

REV 200C15

PART NO. **23438040**

SHEET **8** OF **12**

ALL INFORMATION WITHIN ABOVE BORDER TO BE PRINTED EXACTLY AS SHOWN ON 8.5 x 11 WHITE 16 POUND NON-BOND RECYCLABLE PAPER. PRINT ON BOTH SIDES, EXCLUDING TEMPLATES. TO BE UNITIZED IN ACCORDANCE WITH GM SPECIFICATIONS.

DATE	REVISION	AUTH	DR
15MY15	Initial Release - Timothy Langan	2285239	
200C15	Revision - Timothy Langan	2400613	

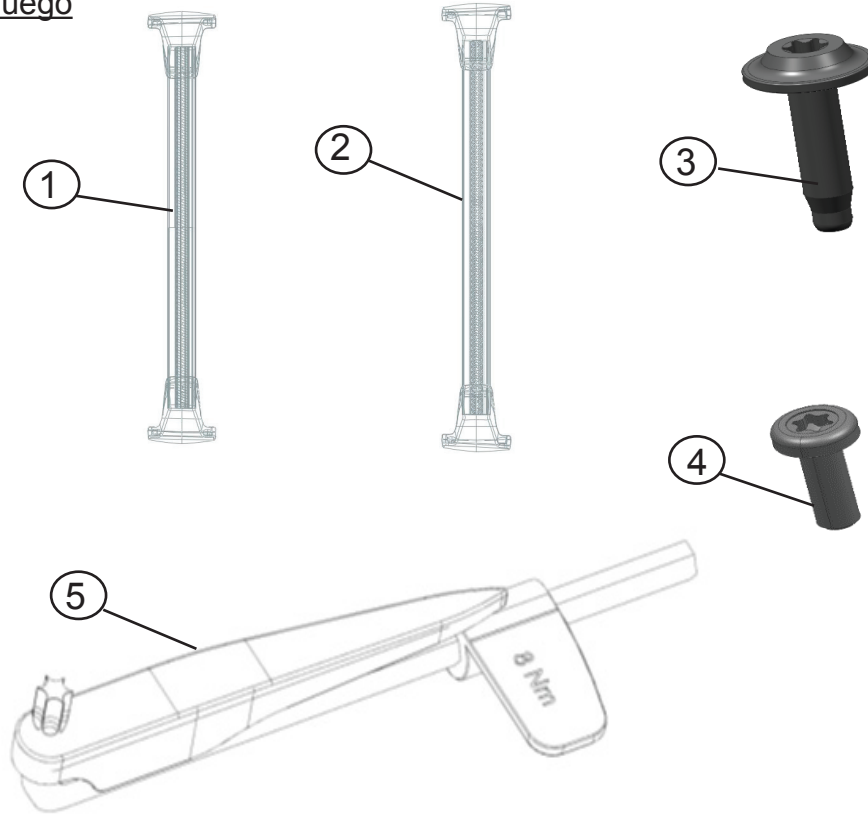
TITLE	<b>INSTALLATION INSTRUCTIONS</b>		
	<b>Cross Rails - Luggage Carrier</b>		
PART NO.	<b>23438040</b>	SHEET	<b>8</b> OF <b>12</b>



# Carriles Cruzados C1UL

## Instrucciones de Instalación

Contenido del Juego



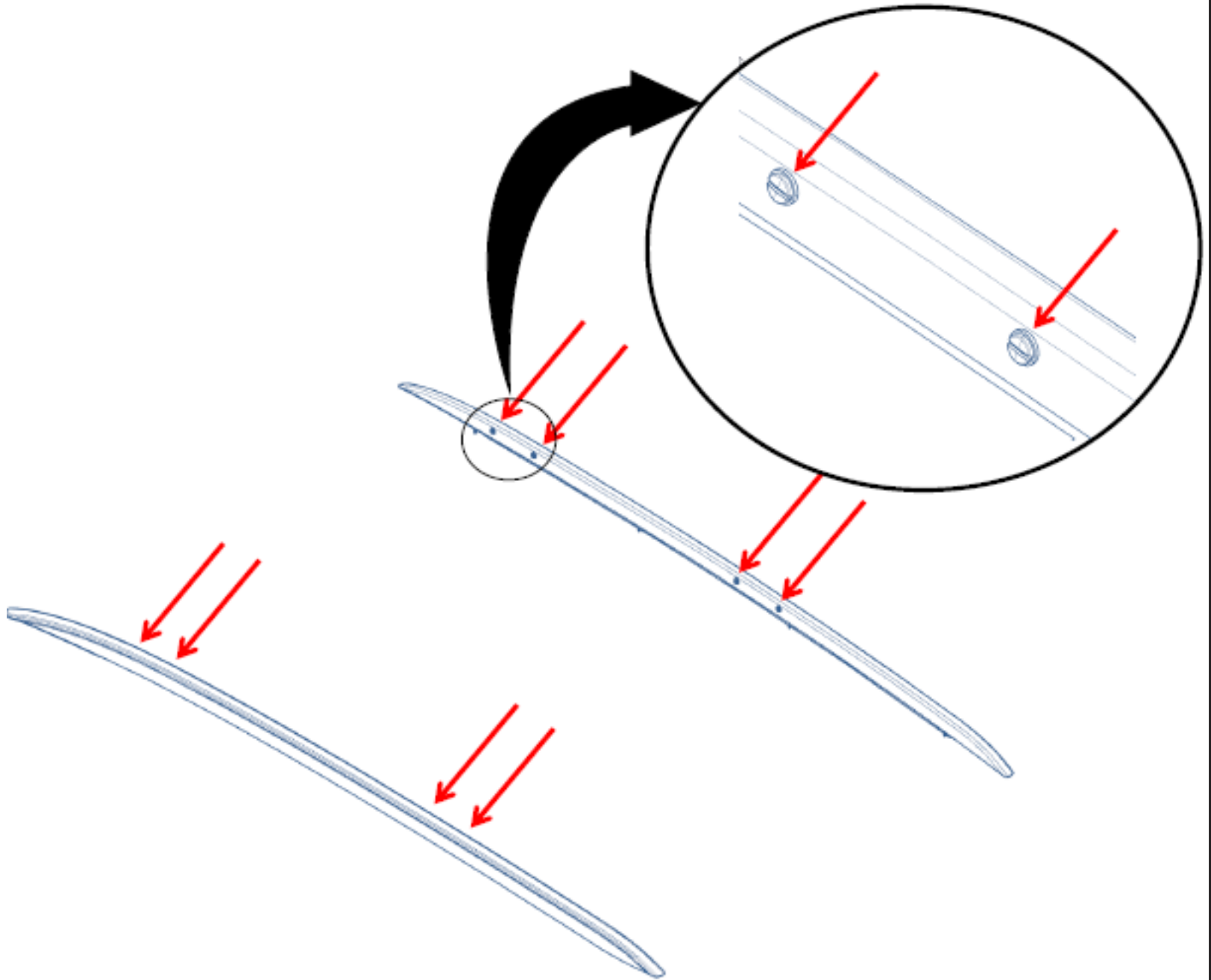
ÍTEM	DESCRIPCIÓN	CANT.
1	CARRIL CRUZADO FRONTAL C1UL	1
2	CARRIL CRUZADO TRASERO C1UL	1
	CONJUNTO DE EQUIPO	1
3	TORNILLO M6 X 25	8
4	TORNILLO M6 X 16	4
5	LLAVE DINAMOMÉTRICA	1

Herramientas Requeridas

- Destornillador de Cabeza Plana
- Herramienta de apalancamiento

DATE	REVISION	AUTH	DR
15MY15	Initial Release - Timothy Langan	2285239	
200C15	Revision - Timothy Langan	2400613	

1. Retire los 8 tapones de los rieles del techo girando los tapones en sentido contrario a las manecillas del reloj a mano y retire el tapón usando una herramienta de palanca.



**Cross Rails - Luggage Carrier**

REV 200C15

PART NO. **23438040**

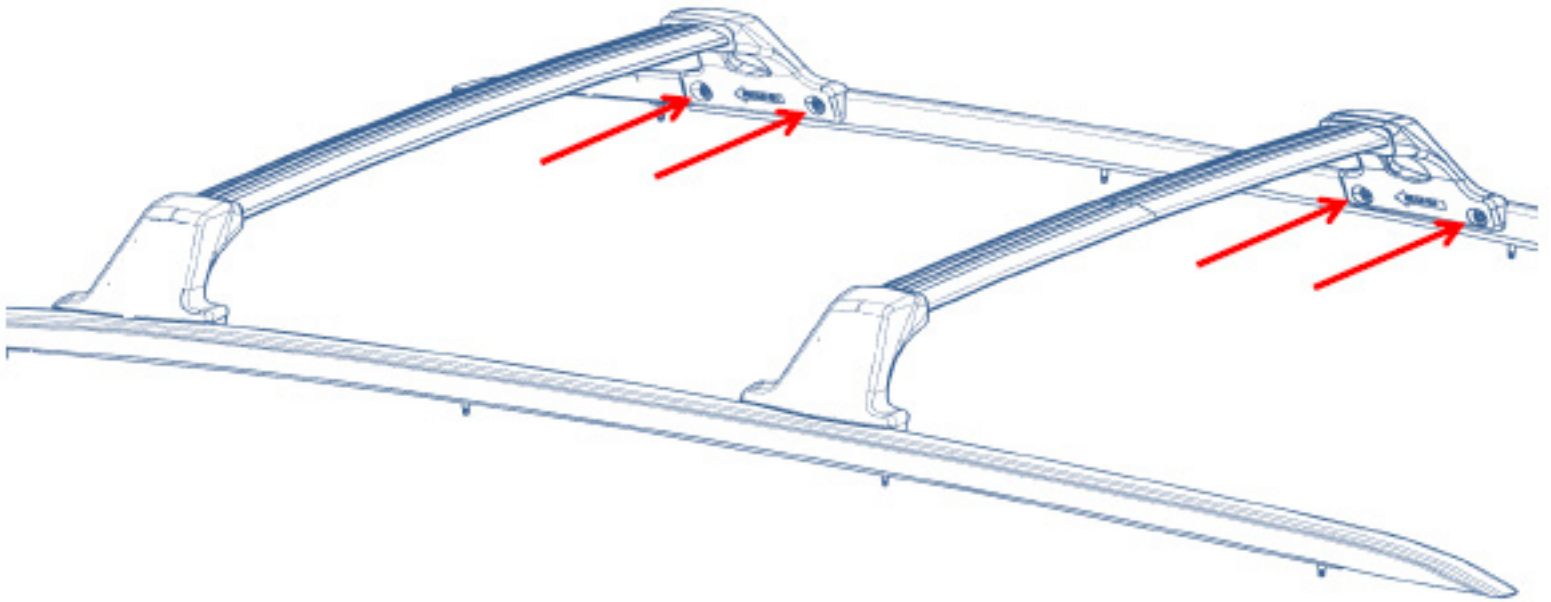
SHEET **10** OF **12**

ALL INFORMATION WITHIN ABOVE BORDER TO BE PRINTED EXACTLY AS SHOWN ON 8.5 x 11 WHITE 16 POUND NON-BOND RECYCLABLE PAPER. PRINT ON BOTH SIDES, EXCLUDING TEMPLATES. TO BE UNITIZED IN ACCORDANCE WITH GM SPECIFICATIONS.

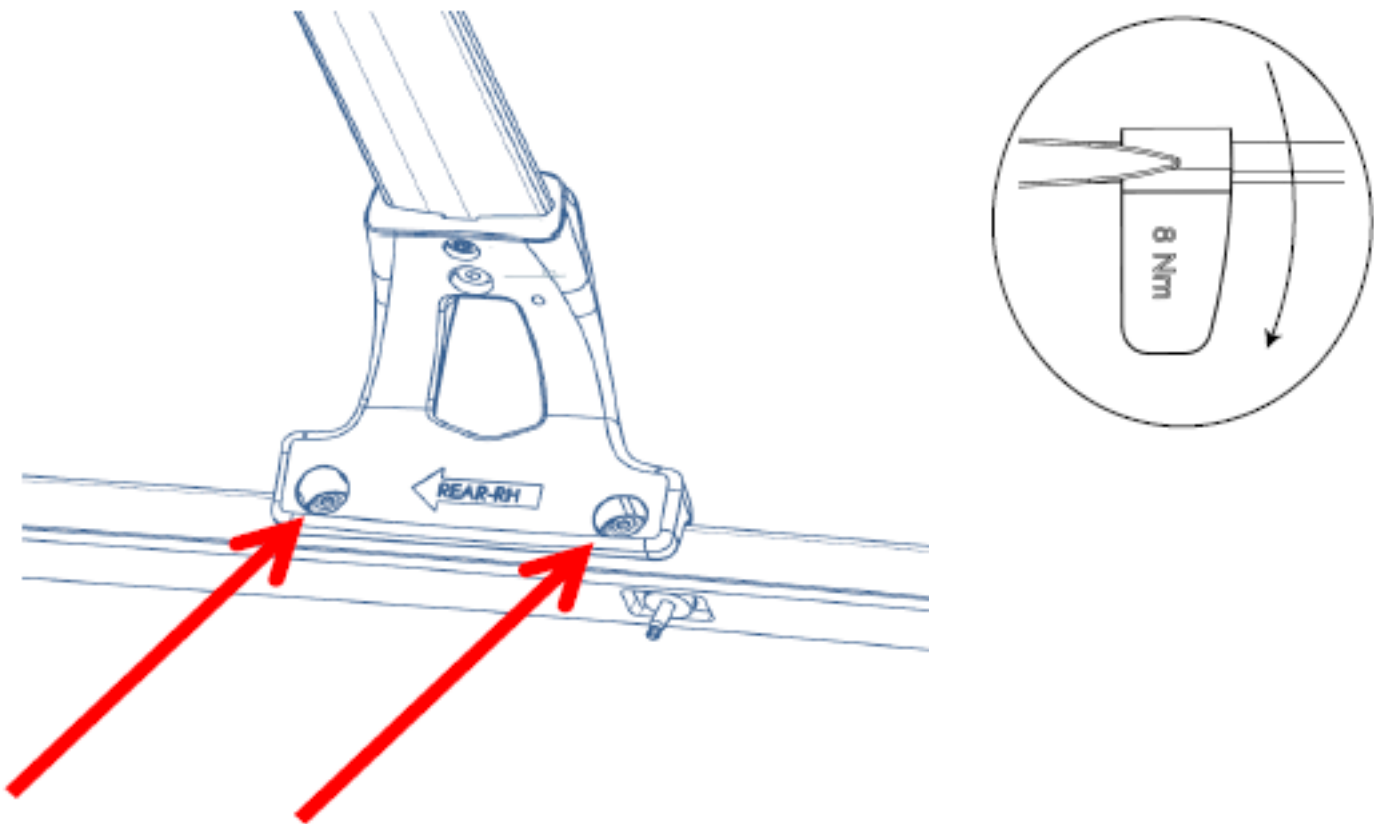
DATE	REVISION	AUTH	DR
15MY15	Initial Release - Timothy Langan	2285239	
200C15	Revision - Timothy Langan	2400613	

<b>INSTALLATION INSTRUCTIONS</b>	
<b>Cross Rails - Luggage Carrier</b>	
PART NO.	<b>23438040</b>
SHEET	<b>10</b> OF <b>12</b>

2. Alinee los orificios del artículo #1 y #2 (Carriles Cruzados) con los orificios en los Carriles Laterales. Instale el artículo #3 (8 tornillos M6 x 25) a través de los Carriles Cruzados y dentro de los Carriles de Techo.
  - \*Observe que las flechas en los Carriles Cruzados se encaran hacia el frente del vehículo.



3. Utilice el artículo #5 (Llave de Par) para apretar los 8 elementos del artículo #3 (tornillos M6 x 25). Apriete con la llave hasta que la aguja se alinee con la línea para asegurar que tenga el par de apriete adecuado. (8 Nm)



Cross Rails - Luggage Carrier

REV 200C15

PART NO.

23438040

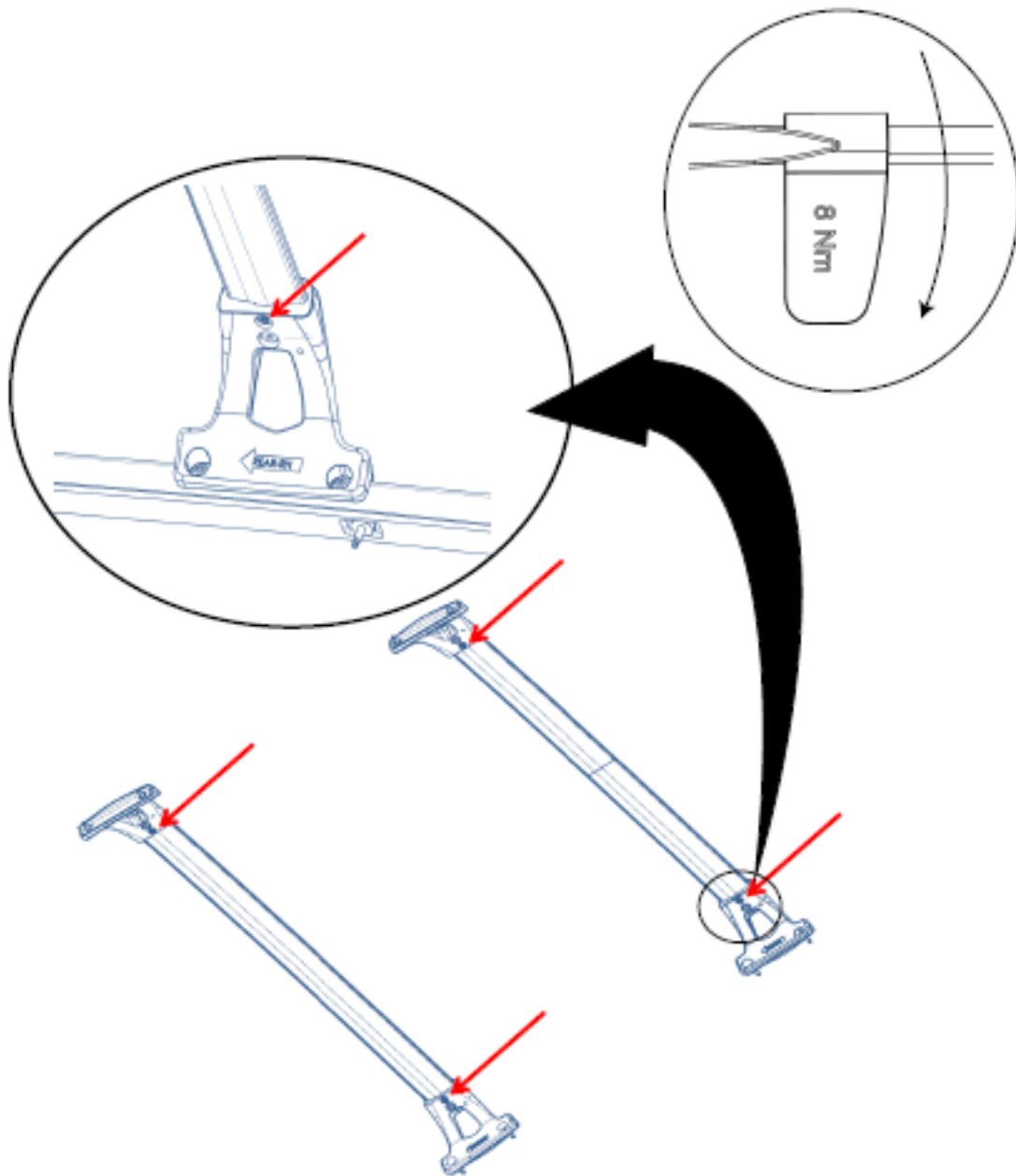
SHEET 11 OF 12

ALL INFORMATION WITHIN ABOVE BORDER TO BE PRINTED EXACTLY AS SHOWN ON 8.5 x 11 WHITE 16 POUND NON-BOND RECYCLABLE PAPER. PRINT ON BOTH SIDES, EXCLUDING TEMPLATES. TO BE UNITIZED IN ACCORDANCE WITH GM SPECIFICATIONS.

DATE	REVISION	AUTH	DR
15MY15	Initial Release - Timothy Langan	2285239	
200C15	Revision - Timothy Langan	2400613	

TITLE	PART NO.	SHEET	OF
INSTALLATION INSTRUCTIONS Cross Rails - Luggage Carrier	23438040	11	12

4. Instale el artículo #4 (2 tornillos M6 x 16) dentro de la ubicación disponible en el lado bajo de cada Carril cruzado.



5. Apriete el artículo #4 (tornillos M6 x 16) con el artículo #5 (Llave de par). Apriete con la llave hasta que la aguja se alinee con la línea para asegurar que tenga el par de apriete adecuado. (8 Nm)

Cross Rails - Luggage Carrier

REV 200C15

PART NO. 23438040

SHEET 12 OF 12

ALL INFORMATION WITHIN ABOVE BORDER TO BE PRINTED EXACTLY AS SHOWN ON 8.5 x 11 WHITE 16 POUND NON-BOND RECYCLABLE PAPER. PRINT ON BOTH SIDES, EXCLUDING TEMPLATES. TO BE UNITIZED IN ACCORDANCE WITH GM SPECIFICATIONS.

DATE	REVISION	AUTH	DR
15MY15	Initial Release - Timothy Langan	2285239	
200C15	Revision - Timothy Langan	2400613	

TITLE	INSTALLATION INSTRUCTIONS Cross Rails - Luggage Carrier		
PART NO.	23438040	SHEET	12 OF 12